

Kindergarten Classroom E-AC-3

Features - Fixed Equipment

- F1 Open casework - student coats and personal items
- F2 Tall wardrobe w/file drawers
- F3 Base & wall cabinets
- F4 Sink base cabinet
- F5 Marker board
- F6 Tack board
- F7 Pencil sharpener support
- F8 Windows with integral blinds
- F9 Towel dispenser
- F10 Soap dispenser
- F11 High storage cabinet
- F12 Tall cabinets
(could have tote trays, optional)

Features - Loose Furnishings

- Student desks/tables
- Computer workstation furniture
- Student chairs
- Teacher workstation/computer support and chair
- File cabinet
- Low bookcases (fixed or mobile) Sand/water table
- Children's painting easel
- Teacher reading chair or stool
- Wastebasket
- Pencil sharpener

Finishes:

- Flooring - Carpet; Resilient -4' width in front of cabinets
- Optional - All resilient

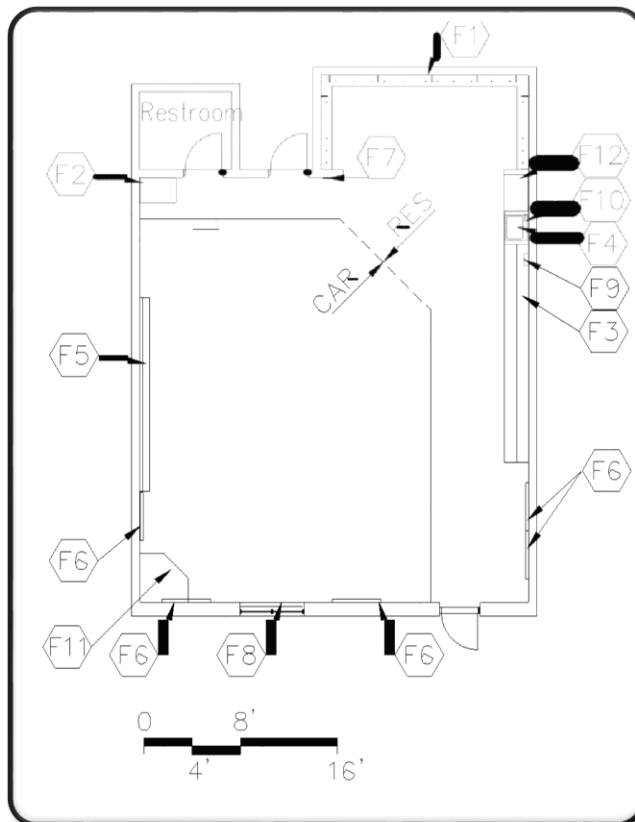
Base - Resilient base

Ceiling - Suspended, acoustical

Walls - Painted concrete masonry units

Notes

1. Electrical - duplex receptacles; multi-level switching
2. Technology - video port, data port, voice port & phone;
data ports for students; clock; overhead projector
3. Plumbing - sink with drinking fountain



Kindergarten Restroom E-AC-4

Features - Fixed Equipment

- F1 Towel dispenser
- F2 24" x 60" mirror
- F3 Toilet tissue holder
- F4 36" and 42" grab bar
- F5 Soap dispenser

Features - Loose Furnishings

Wastebasket

Finishes:

Flooring - Resilient

Optional - Ceramic mosaic tile, porcelain tile, or terrazzo

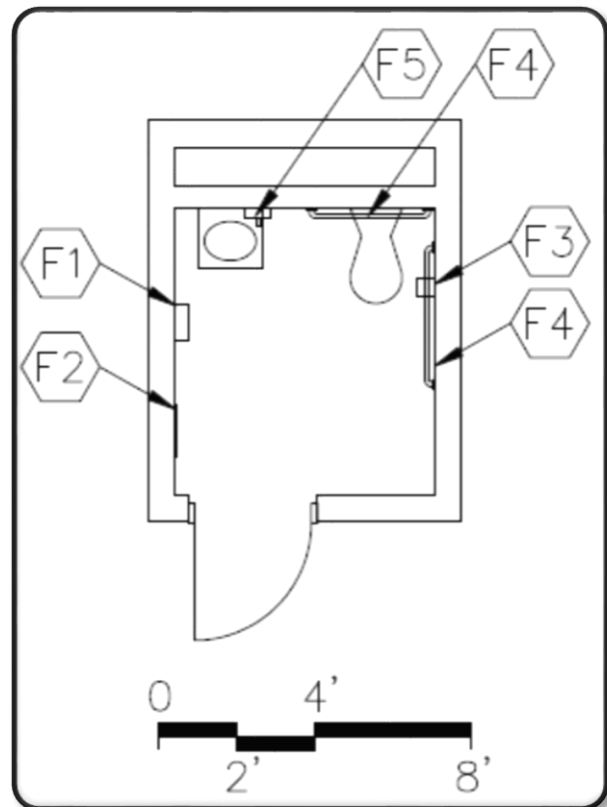
Base - Resilient base (optional: CMT, PT, or TER)

Ceiling - Suspended, acoustical

Walls - Painted concrete masonry units

Notes

1. Plumbing - water closet and lavatory
2. Electrical - single-level switching; receptacles



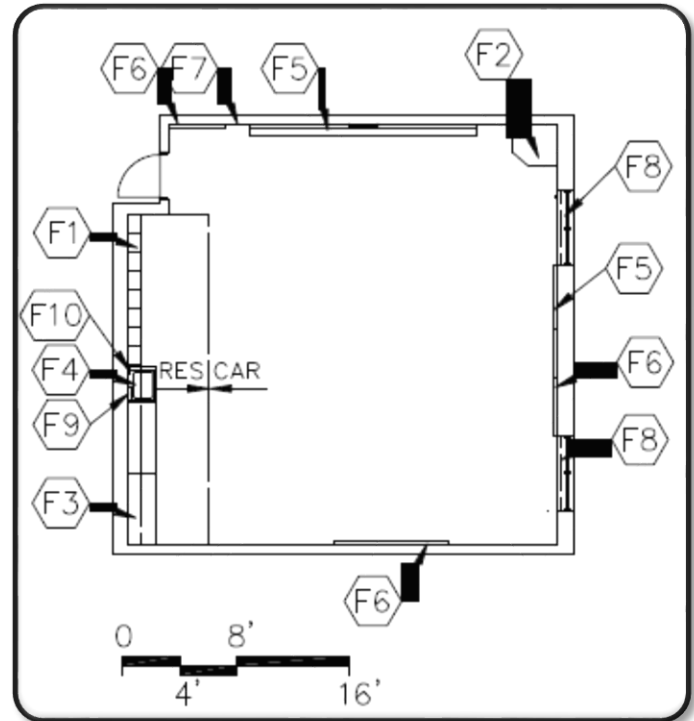
Elementary Classroom E-AC-5

Features - Fixed Equipment

- F1 Open casework - student coats and personal items
- F2 Tall wardrobe w/file drawers
- F3 Base & wall cabinets
- F4 Sink base cabinet
- F5 Marker board
- F6 Tack board
- F7 Pencil sharpener support
- F8 Windows with integral blinds
- F9 Towel dispenser
- F10 Soap dispenser

Features - Loose Furnishings

- Student desks/tables
- Computer workstation furniture
- Student chairs
- Teacher workstation/computer support and chair
- File cabinet
- Low bookcases (fixed or mobile)
- Reading table
- Wastebasket
- Pencil sharpener



Finishes:

- Flooring - Carpet; Resilient -4' width in front of cabinets or
- Optional - All resilient

Base - Resilient base

Ceiling - Suspended, acoustical

Walls - Painted concrete masonry units

Notes

1. Electrical - duplex receptacles; multi-level switching
2. Technology - video port, data port, voice port & phone; data ports for students; clock; overhead projector
3. Plumbing - sink with drinking fountain
4. Miscellaneous - operable partition between classrooms is optional

Teacher Prep Area/Workroom E-AC-6

Features - Fixed Equipment

- F1 Base & wall cabinets
- F2 Sink base cabinet
- F3 Marker board
- F4 Tack board
- F5 Towel dispenser
- F6 Soap dispenser

Features - Loose Furnishings

- Tables and chairs
- Computer workstation furniture
- Wastebasket

Finishes:

Flooring - Carpet

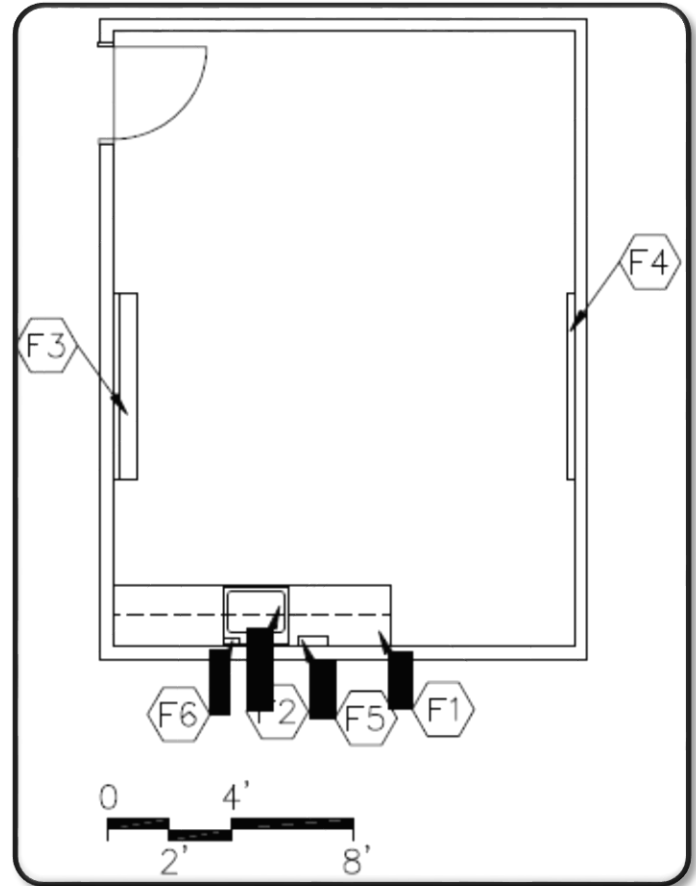
Base - Resilient base

Ceiling - Suspended, acoustical

Walls - Painted concrete masonry units

Notes

1. Electrical - duplex receptacles; single-level switching
2. Technology - video port, voice port & phone; clock; data ports
3. Plumbing - sink



Individual Restroom E-AC-7

Features - Fixed Equipment

- F1 Towel dispenser
- F2 24" x 60" mirror
- F3 Toilet tissue holder
- F4 36" and 42" grab bar
- F5 Soap dispenser

Features - Loose Furnishings

Wastebasket

Finishes:

Flooring - Resilient
Optional - Ceramic mosaic tile, porcelain tile, or terrazzo

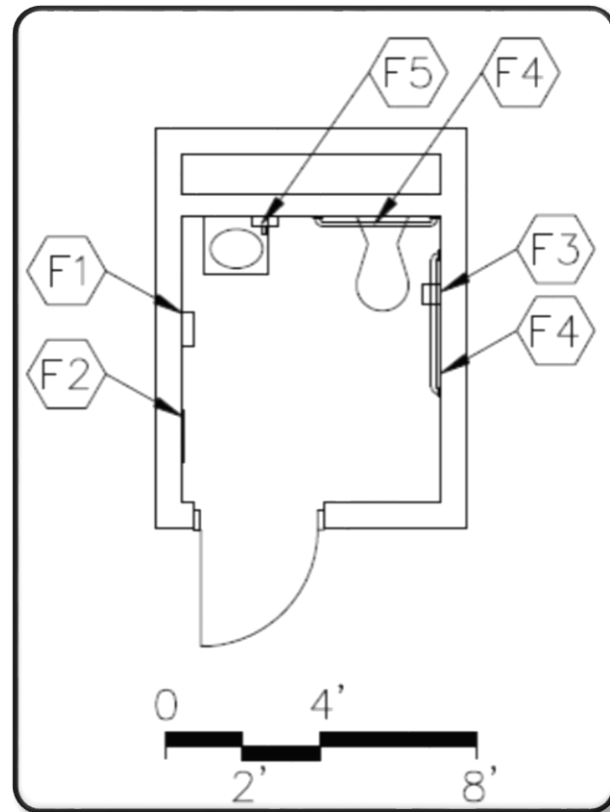
Base - Resilient base (optional: CMT, PT, or TER)

Ceiling - Suspended, acoustical

Walls - Painted concrete masonry units

Notes

1. Plumbing - water closet and lavatory
2. Electrical - single-level switching; receptacles



Instructional Material Storage E-AC-8

Features - Fixed Equipment

F1 Open metal shelving

Features - Loose Furnishings

N/A

Finishes:

Flooring - Sealed concrete

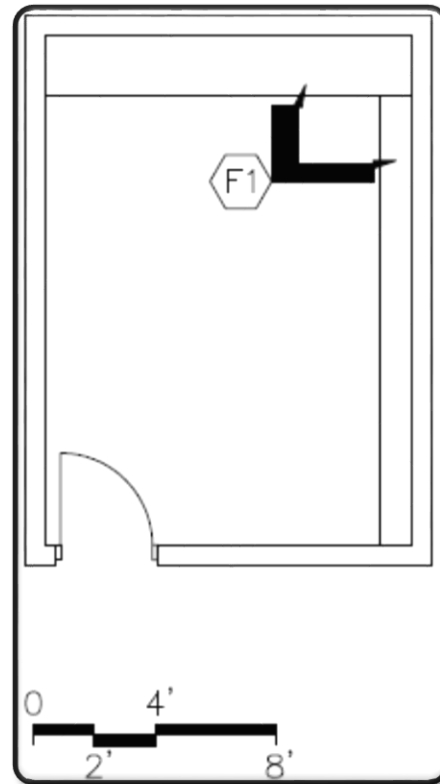
Base - Resilient base

Ceiling - Suspended, acoustical or painted structure

Walls - Painted concrete masonry units

Notes

1. Electrical - duplex receptacles; single-level switching



Instructional Multi-Purpose Room E-AC-9

Features - Fixed Equipment

N/A

Features - Loose Furnishings

N/A

Finishes:

Flooring - Resilient

Optional - Ceramic mosaic tile, porcelain tile, or terrazzo

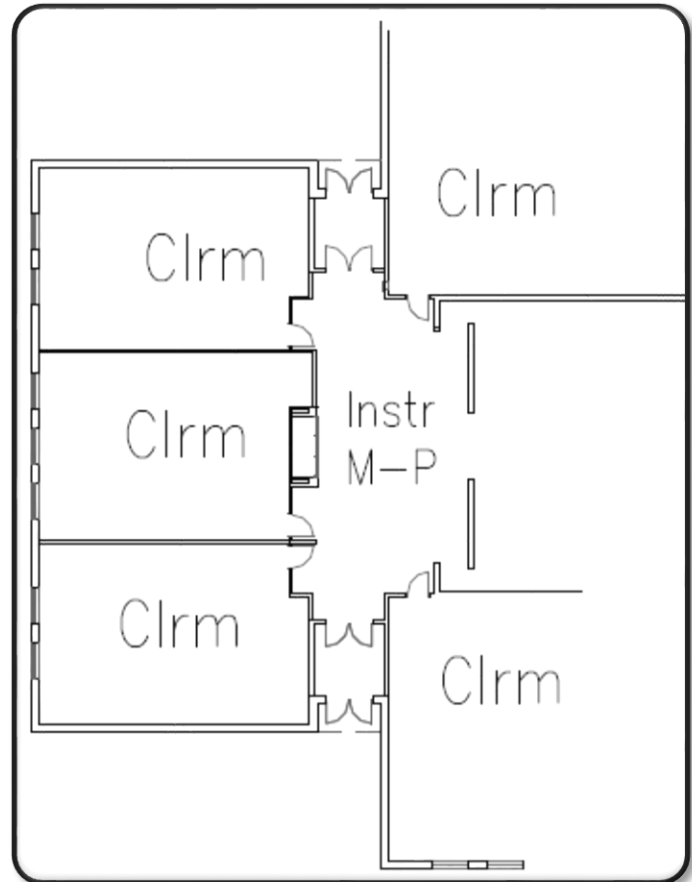
Base - Resilient, porcelain tile, or terrazzo

Ceiling - Suspended, acoustical

Walls - Painted concrete masonry units

Notes

1. Electrical - duplex receptacles; dual-level switching
2. Technology - wireless access points; video ports; data ports



Instructional and activity areas shall be accessible by corridors without passing through another instructional or activity area.

Fine Arts Instruction Room E-AC-10

Features - Fixed Equipment

- F1 Sink base cabinet, 30" deep
- F2 Tall wardrobe w/file drawers
- F3 Base cabinets, 30" deep
- F4 Tack board
- F5 Marker board
- F6 Pencil sharpener support
- F7 Windows with integral blinds
- F8 Tall storage cabinets
- F9 Wall cabinets
- F10 Towel dispensers
- F11 Soap dispensers
- F12 Bookcases, 12" deep

Features - Loose Furnishings

- Student work tables
- Computer workstation furniture
- Student chairs or stools
- Teacher workstation/computer support and chair
- Drying rack
- Desk height file cabinet
- Wastebasket Pencil sharpener Portable risers
- Music stand and chairs
- Conductor podium
- Folding mobile cart for ORFF instruments

Finishes:

Flooring - Resilient or sealed concrete

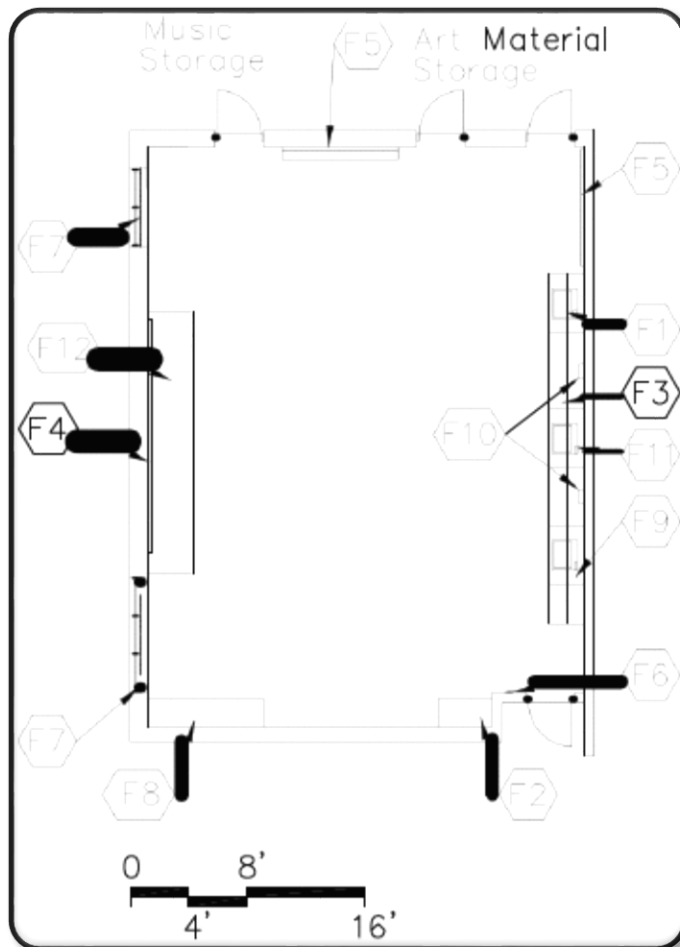
Base - Resilient base

Ceiling - Suspended, acoustical

Walls - Painted concrete masonry units

Notes

1. Electrical - duplex receptacles; multi-level switching; track lighting
2. Technology - video port, data port, voice port & phone; clock; overhead projector data ports for students
3. Plumbing - sinks with solids interceptor and drinking fountain
4. HVAC - manually operated exhaust system



Instructional Material Storage E-AC-11

Features - Fixed Equipment

- F1 Tall storage cabinet
- F2 Base cabinets, 30" deep
- F3 Wall cabinets, 12" deep
- F4 Kiln

Features - Loose Furnishings

- Mobile materials cart
- Tall dry storage units
- Tall damp storage units

Finishes:

Flooring - Sealed concrete

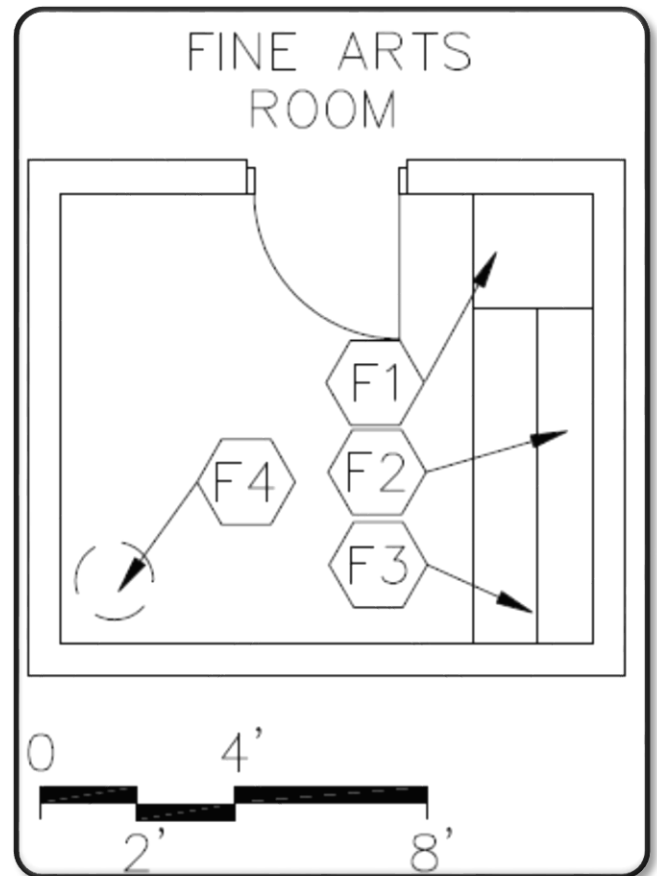
Base - Resilient base

Ceiling - Suspended, acoustical or painted structure

Walls - Painted concrete masonry units

Notes

1. Electrical - duplex receptacle; single-level switching; electrical connection for kiln
2. HVAC - temperature controlled exhaust; ventilation for kiln



Self-Contained Classroom E-SE-1

Features - Fixed Equipment

- F1 Open casework - student coats and personal items
- F2 Tall wardrobe w/file drawers
- F3 Base & wall cabinets
- F4 Sink base cabinet
- F5 Marker board
- F6 Tack board
- F7 Pencil sharpener support
- F8 Windows with integral blinds
- F9 Towel dispenser
- F10 Soap dispenser

Features - Loose Furnishings

- Student desks/tables
- Student chairs
- Teacher workstation/computer support and chair
- Computer workstation furniture
- File cabinet
- Low bookcases (fixed or mobile)
- Reading table
- Wastebasket
- Pencil sharpener

Finishes:

- Flooring - Carpet; Resilient - 4' width in front of cabinets
- Optional - All resilient

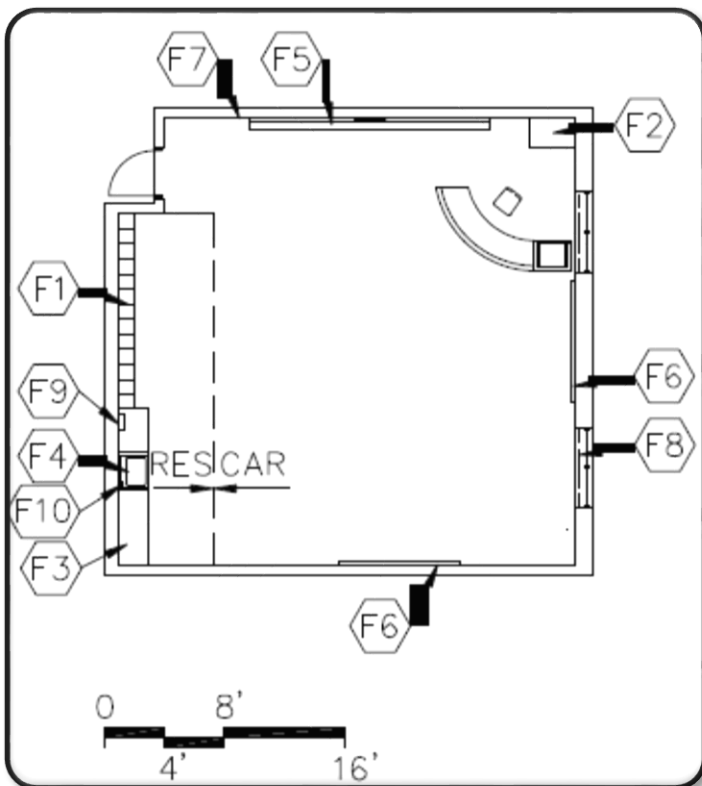
Base - Resilient base

Ceiling - Suspended, acoustical

Walls - Painted concrete masonry units

Notes

1. Electrical - duplex receptacles; multi-level switching
2. Technology - video port, data port, voice port & phone; data ports for students; clock; overhead projector
3. Plumbing - sink with drinking fountain



**Workroom/Conference
(quiet area)
E-SE-2**

Features - Fixed Equipment

F1 Tack board

Features - Loose Furnishings

Student desk and chair

Wastebasket

Finishes:

Flooring - Carpet

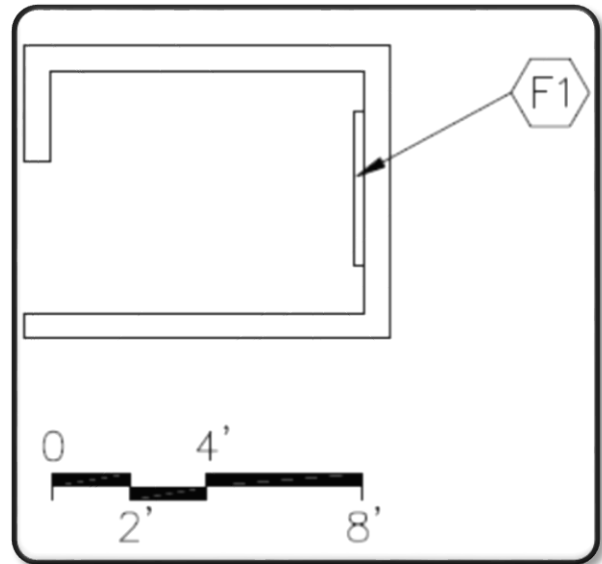
Base - Resilient base

Ceiling - Suspended, acoustical

Walls - Painted concrete masonry units

Notes

1. Electrical - duplex receptacle; dimmable lighting
2. Technology - clock



Restroom/Shower E-SE-3

Features - Fixed Equipment

- F1 Base cabinet
- F2 24" x 60" mirror
- F3 Toilet tissue holder
- F4 36" and 42" grab bar
- F5 Soap dispenser
- F6 Towel dispenser
- F7 Shower curtain and rod
- F8 ADA shower accessories

Features - Loose Furnishings

Wastebasket

Finishes:

Flooring - Restroom - Resilient
Shower - Ceramic mosaic tile, porcelain tile, or terrazzo

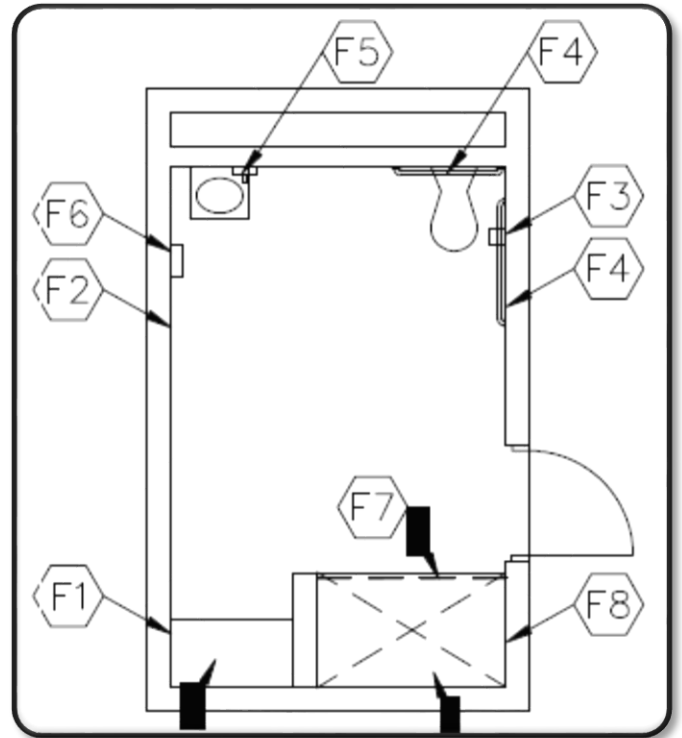
Base - Restroom - Resilient base
Shower - Ceramic mosaic tile, porcelain tile, or terrazzo

Ceiling - Restroom- Suspended, acoustical
Shower - Painted Portland cement plaster or interior finish system

Walls - Epoxy painted concrete masonry units

Notes

1. Plumbing - water closet and lavatory; ADA shower controls and head; floor drain
2. Electrical - duplex receptacles; single-level switching



Special Education/Resource E-SE-4

Features - Fixed Equipment

- F1 Windows with integral blinds
- F2 Tall wardrobe w/file drawers
- F3 Base cabinets
- F4 Sink base cabinet
- F5 Marker board
- F6 Tack board
- F7 Pencil sharpener support
- F8 Towel dispenser
- F9 Soap dispenser
- F10 Operable partition
- F11 Open casework-coats with wall cabinets above

Features - Loose Furnishings

- Student desks/tables
- Computer workstation furniture
- Student chairs
- Teacher desk or workstation/computer support and chair
- File cabinet
- Mobile bookcases or storage unit
- Wastebasket
- Pencil sharpener

Finishes:

Flooring - Carpet; Resilient - 4' width in front of cabinets

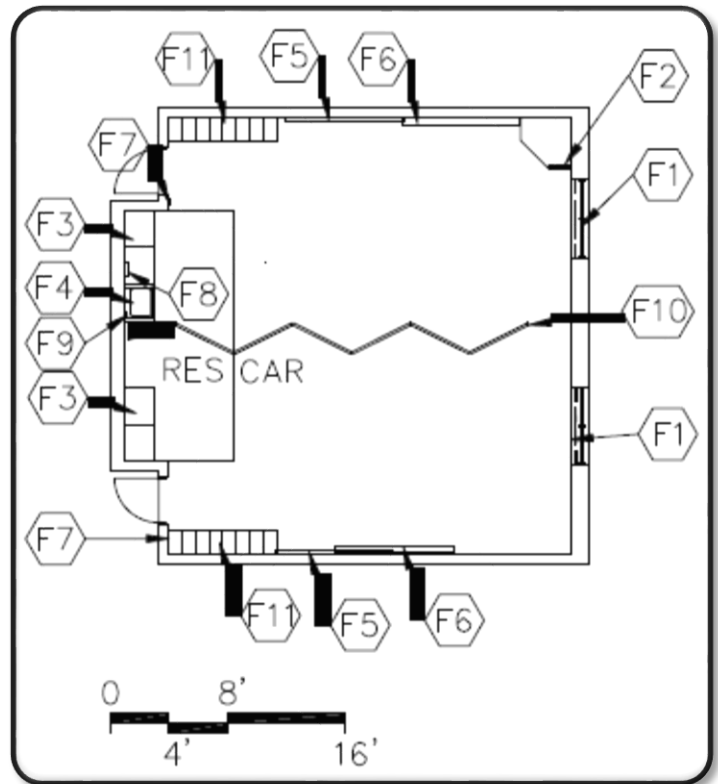
Base - Resilient base

Ceiling - Suspended, acoustical

Walls - Painted concrete masonry units

Notes

1. Plumbing - sink
2. Electrical - duplex receptacles; multi-level switching
3. Technology - video port, data port, voice port & phone; data ports for students; clock; overhead projector



Speech Therapy E-SE-5

Features - Fixed Equipment

- F1 Work surface with file drawers
- F2 Marker board
- F3 Tack board
- F4 Tall wardrobe
- F5 Wall cabinets

Features - Loose Furnishings

- Desk and chair
- Computer desk return
- Small table with chairs
- Wastebasket

Finishes:

Flooring - Carpet

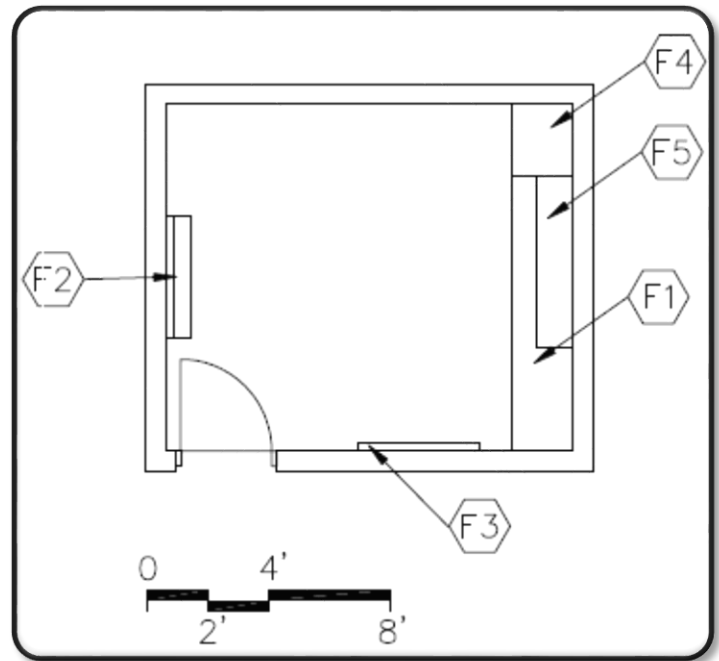
Base - Resilient base

Ceiling - Suspended, acoustical

Walls - Painted gypsum wallboard over metal studs

Notes

1. Electrical - duplex receptacles; single-level switching
2. Technology - data port, video port, voice port & phone; clock



Storage E-SE-6

Features - Fixed Equipment

F1 Open metal shelving

Features - Loose Furnishings

N/A

Finishes:

Flooring - Resilient

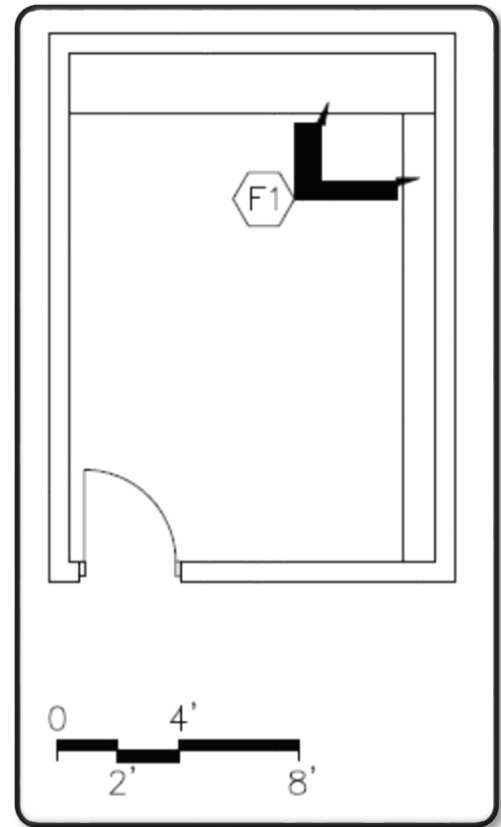
Base - Resilient base

Ceiling - Suspended, acoustical

Walls - Painted concrete masonry units

Notes

1. Electrical - duplex receptacle; single-level switching



Occupational and Physical Therapy E-SE-7

Features - Fixed Equipment

- F1 Marker board
- F2 Tack board
- F3 Wall cabinets

Features - Loose Furnishings

- Chairs
- Wastebasket

Finishes:

Flooring - Carpet

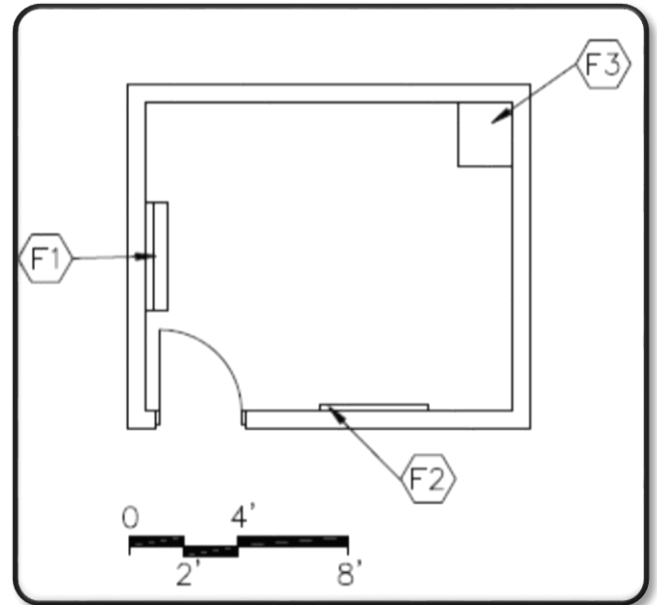
Base - Resilient base

Ceiling - Suspended, acoustical

Walls - Painted gypsum wallboard over metal studs

Notes

1. Electrical - duplex receptacles; single-level switching
2. Technology - data port, video port, voice port & phone; clock



Reception Area E-AD-1

Features - Fixed Equipment

F1 Interior windows

Features - Loose Furnishings

Visitor chairs

End table

Wastebasket

Finishes:

Flooring - Carpet

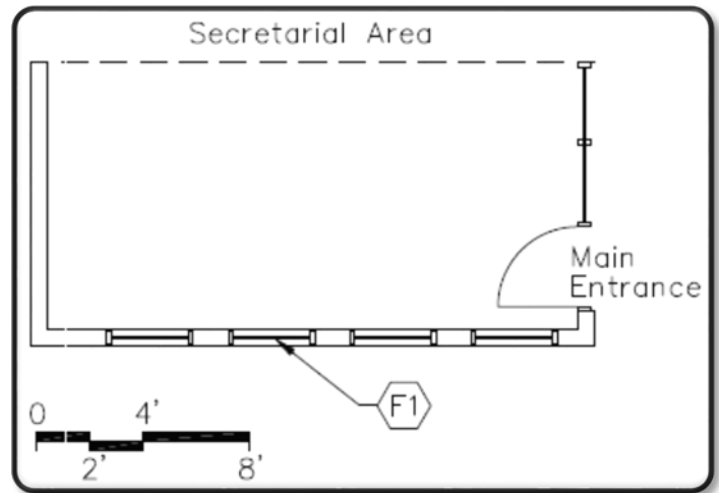
Base - Resilient base

Ceiling - Suspended, acoustical

Walls - Painted gypsum wallboard over metal studs

Notes

1. Electrical - duplex receptacles; single-level switching
2. Technology - video port, voice port & phone; clock



Secretarial Area E-AD-2

Features - Fixed Equipment

- F1 Work surface with file drawers
- F2 High counter top

Features - Loose Furnishings

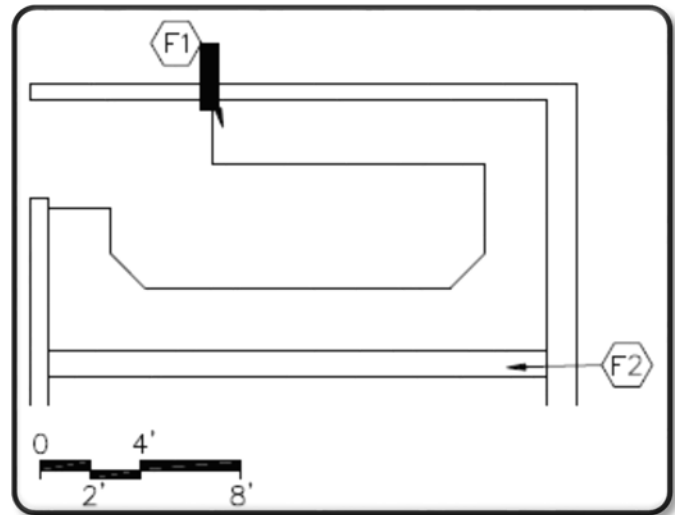
- Secretarial chair(s)
- Wastebasket(s)

Finishes:

- Flooring - Carpet
- Base - Resilient base
- Ceiling - Suspended, acoustical
- Walls - Painted gypsum wallboard over metal studs

Notes

1. Electrical - duplex receptacles; single-level switching
2. Technology - data port, voice port & phone at each secretarial station; fax port, data port for printer; clock
3. Miscellaneous - fax machine; printer; computer/typewriter



Principal's Office E-AD-3

Features - Fixed Equipment

- F1 Work surface with file drawers
- F2 Marker board
- F3 Tack board
- F4 Tall wardrobe
- F5 Wall cabinets

Features - Loose Furnishings

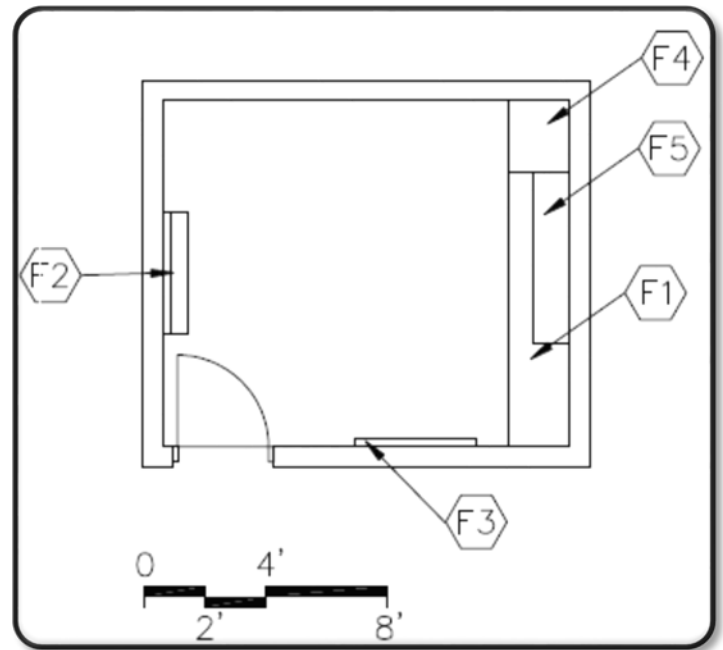
- Desk and chair
- Computer desk return
- Visitor chairs
- Wastebasket(s)

Finishes:

- Flooring - Carpet
- Base - Resilient base
- Ceiling - Suspended, acoustical
- Walls - Painted gypsum wallboard over metal studs

Notes

1. Electrical - duplex receptacles; single-level switching
2. Technology - data port, video port, voice port & phone; clock



Assistant Principal's Office E-AD-4

Features - Fixed Equipment

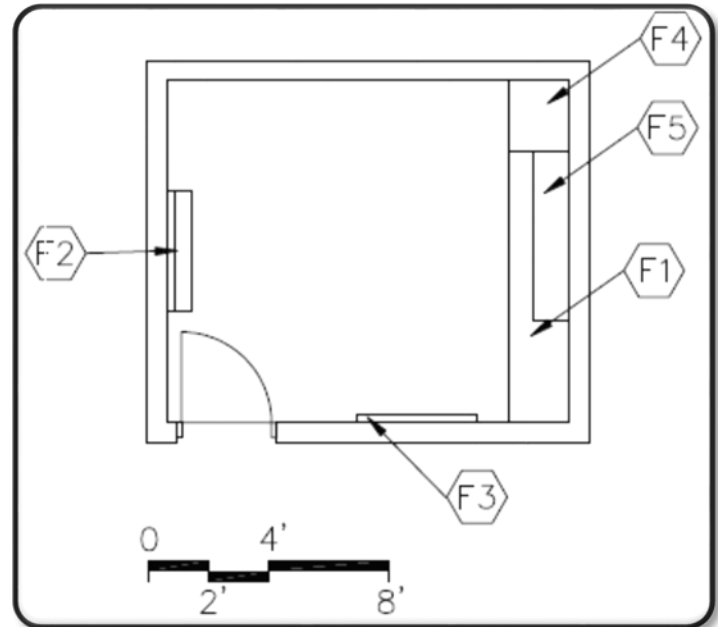
- F1 Work surface with file drawers
- F2 Marker board
- F3 Tack board
- F4 Tall wardrobe
- F5 Wall cabinets

Features - Loose Furnishings

- Desk and chair
- Computer desk return
- Visitor chairs
- Wastebasket(s)

Finishes:

- Flooring - Carpet
- Base - Resilient base
- Ceiling - Suspended, acoustical
- Walls - Painted gypsum wallboard over metal studs



Notes

1. Electrical - duplex receptacles; single-level switching
2. Technology - data port, video port, voice port & phone; clock

Conference Room E-AD-5

Features - Fixed Equipment

- F1 Marker board
- F2 Tack board
- F3 Base cabinets

Features - Loose Furnishings

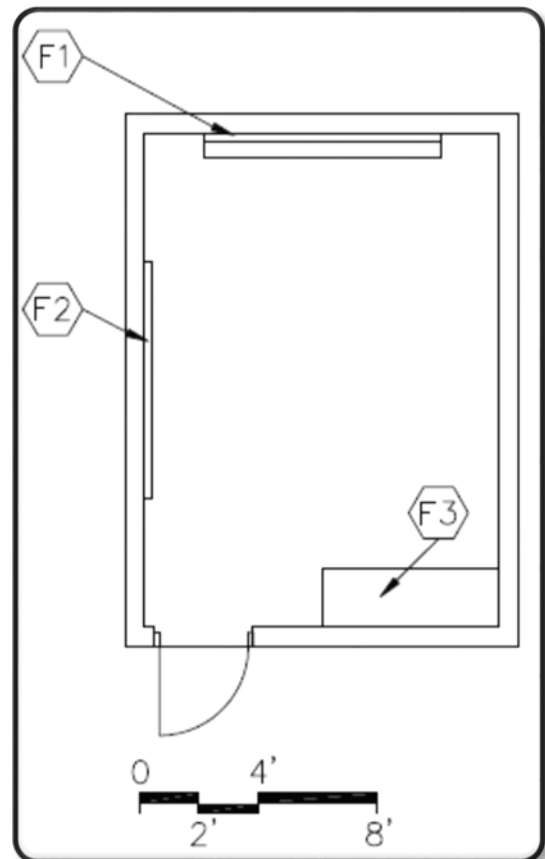
- Conference table
- Chairs
- Wastebasket

Finishes:

- Flooring - Carpet
- Base - Resilient base
- Ceiling - Suspended, acoustical
- Walls - Painted gypsum wallboard over metal studs

Notes

1. Electrical - duplex receptacles; multi-level switching
2. Technology - data port, voice port & phone; video port and video display device, clock



Mail/Work/Copy Room E-AD-6

Features - Fixed Equipment

- F1 Base cabinets
- F2 Tall Storage Cabinet
- F3 Sink base cabinet
- F4 Mail Cubicle
- F5 Wall Cabinets
- F6 Towel dispenser
- F7 Soap dispenser

Features - Loose Furnishings

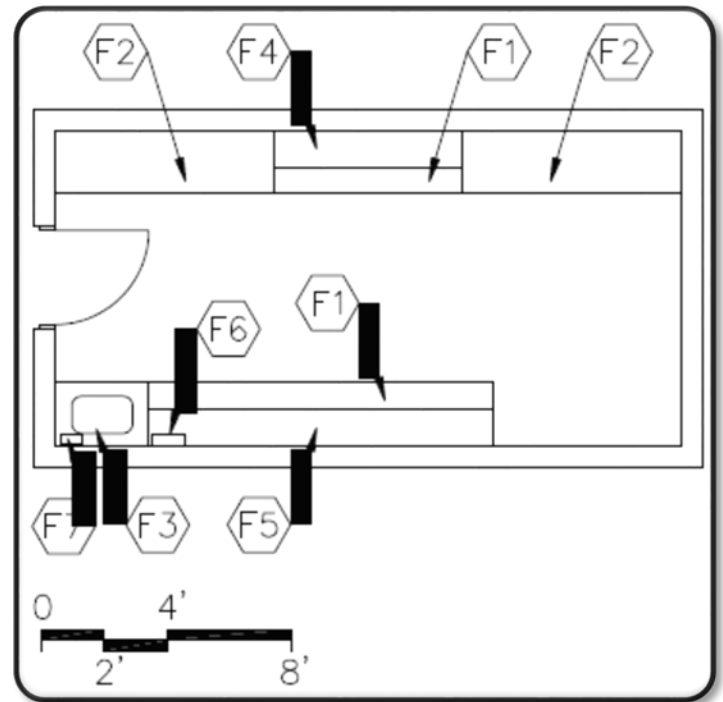
- Worktable
- Wastebasket

Finishes:

- Flooring - Resilient
- Base - Resilient base
- Ceiling - Suspended, acoustical
- Walls - Painted gypsum wallboard over metal studs

Notes

1. Electrical - duplex receptacles; single-level switching; receptacle for copier
2. Technology - voice port & phone; clock
3. Plumbing - sink
4. Miscellaneous - copier



Administrative Storage E-AD-7

Features - Fixed Equipment

F1 Open metal shelving

Features - Loose Furnishings

File cabinets

Finishes:

Flooring - Resilient

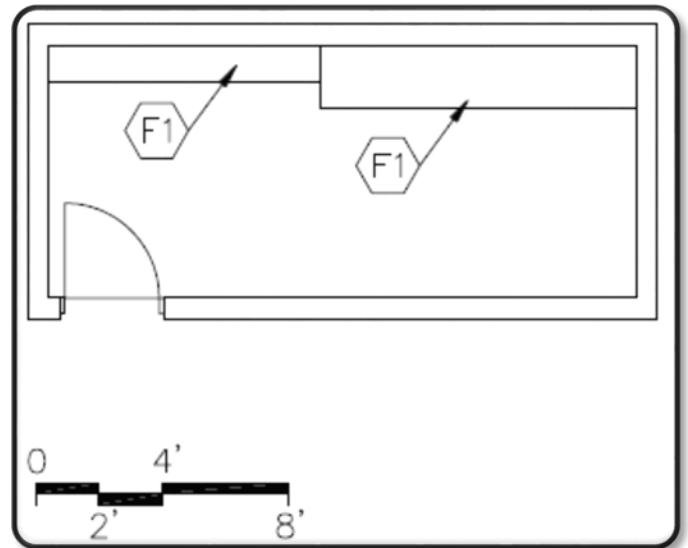
Base - Resilient base

Ceiling - Suspended, acoustical or painted

Walls - Painted concrete masonry units

Notes

1. Electrical - duplex receptacle; single-level switching



Vaults/Record Storage E-AD-8

Features - Fixed Equipment

F1 Open Metal Shelving

Features - Loose Furnishings

File cabinet

Safe

Finishes:

Flooring - Sealed Concrete

Base - Resilient base

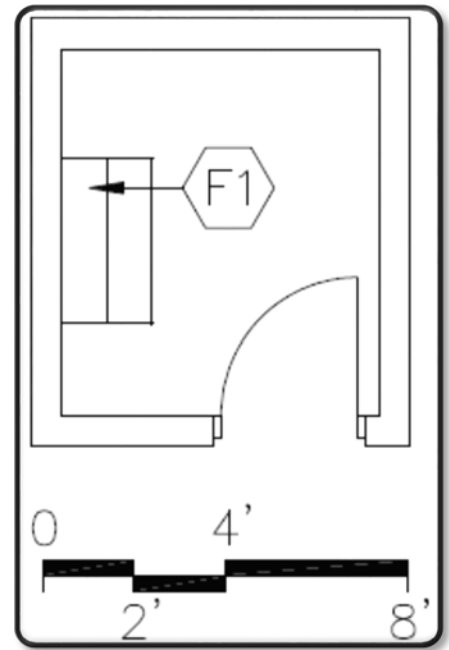
Ceiling - Rated 2 hour construction

Walls - Painted concrete masonry units

Rated 2 hour construction

Notes

1. Electrical - duplex receptacles; single-level switching



In School Suspension E-AD-9

Features - Fixed Equipment

- F1 Base cabinets
- F2 Marker board
- F3 Tack board
- F4 Pencil sharpener support

Features - Loose Furnishings

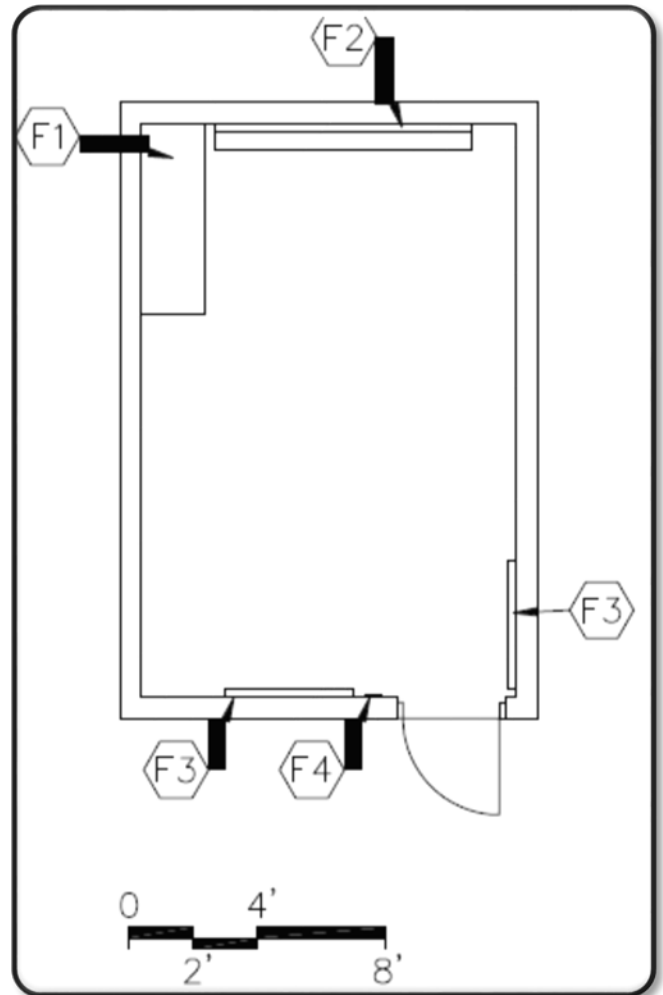
- Student carrels and/or desks
- Student chairs
- Teacher desk and chair
- Computer workstation furniture
- Wastebasket
- Pencil sharpener

Finishes:

- Flooring - Carpet
- Base - Resilient base
- Ceiling - Suspended, acoustical
- Walls - Painted concrete masonry units

Notes

1. Electrical - duplex receptacles; single-level switching
2. Technology - video port, data port, voice port & phone; data ports for students; clock



Restroom E-AD-10

Features - Fixed Equipment

- F1 Towel dispenser
- F2 24" x 60" mirror
- F3 Toilet tissue holder
- F4 36" and 42" grab bar
- F5 Soap dispenser

Features - Loose Furnishings

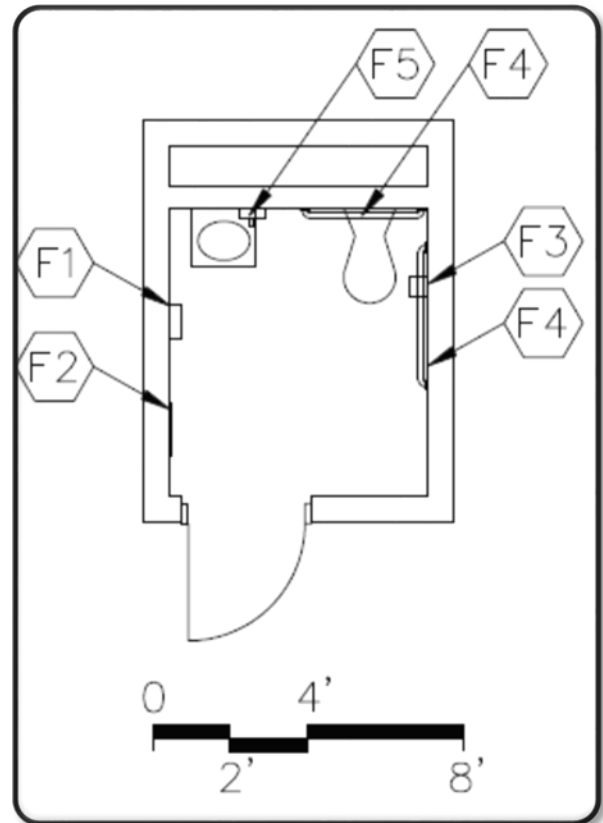
Wastebasket

Finishes:

- Flooring - Resilient
- Optional - Ceramic mosaic tile, porcelain tile, or terrazzo
- Base - Resilient base (optional: CMT, PT, or TER)
- Ceiling - Suspended, acoustical
- Walls - Painted concrete masonry units

Notes

1. Plumbing - water closet and lavatory
2. Electrical - duplex receptacle; single level switching



Guidance Counselor's Office E-AD-11

Features - Fixed Equipment

- F1 Work surface with file drawers
- F2 Marker board
- F3 Tack board
- F4 Tall wardrobe
- F5 Wall cabinets

Features - Loose Furnishings

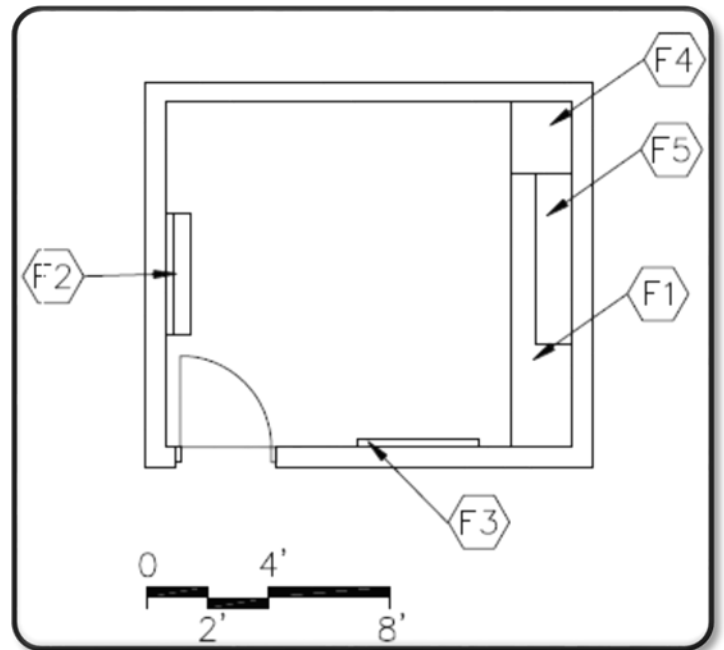
- Desk and chair
- Computer desk return
- Visitor chairs
- Wastebasket

Finishes:

- Flooring - Carpet
- Base - Resilient base
- Ceiling - Suspended, acoustical
- Walls - Painted gypsum wallboard over metal studs

Notes

1. Electrical - duplex receptacles; single-level switching
2. Technology - data port, video port, voice port & phone; clock



Guidance Reception Area E-AD-12

Features - Fixed Equipment

F1 Interior Windows

Features - Loose Furnishings

Visitor chairs

End Table

Wastebasket

Finishes:

Flooring - Carpet

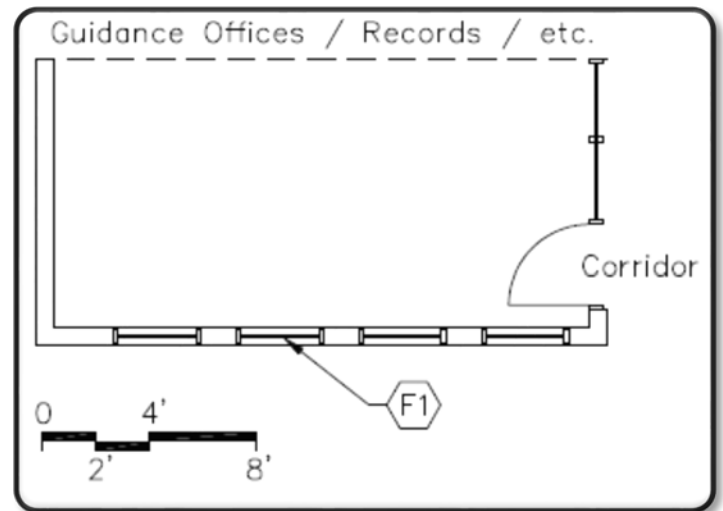
Base - Resilient base

Ceiling - Suspended, acoustical

Walls - Painted gypsum wallboard over metal studs

Notes

1. Electrical - duplex receptacles; single-level switching
2. Technology - video port, voice port & phone; clock



Guidance Records/Storage E-AD-13

Features - Fixed Equipment

F1 Base and wall cabinets

F2 Tall storage cabinets

Features - Loose Furnishings

File cabinets

Finishes:

Flooring - Resilient

Base - Resilient base

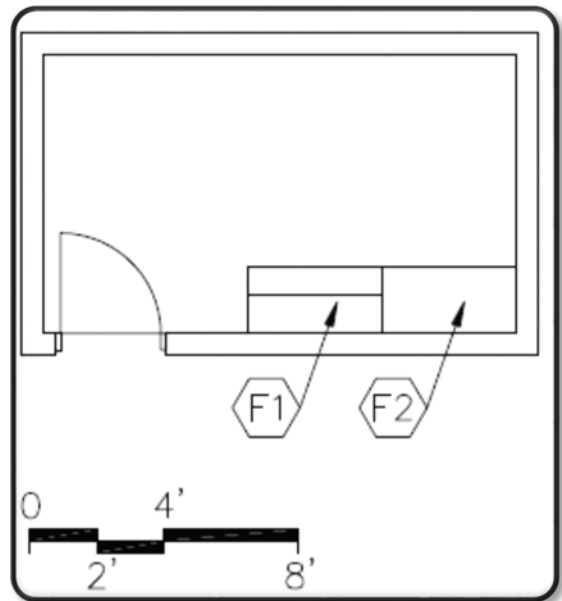
Ceiling - Rated 2 hour construction

Walls - Painted gypsum wallboard over metal studs;

Rated 2 hour construction

Notes

1. Electrical - duplex receptacles; single-level switching



Parent Center E-AD-14

Features - Fixed Equipment

- F1 Base cabinets
- F2 Tall wardrobe
- F3 Marker board
- F4 Tack board
- F5 Pencil sharpener support
- F6 Sink base cabinet
- F7 Towel dispenser
- F8 Soap dispenser

Features - Loose Furnishings

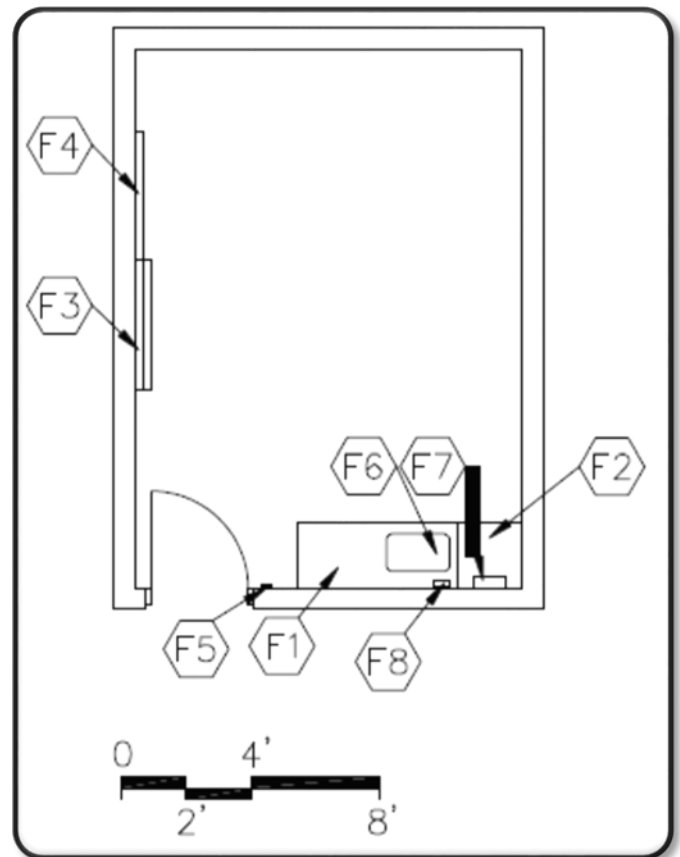
- Tables and chairs
- Computer workstation furniture
- Wastebasket
- Pencil sharpener

Finishes:

- Flooring - Carpet
- Base - Resilient base
- Ceiling - Suspended, acoustical
- Walls - Painted gypsum wallboard over metal studs

Notes

1. Electrical - duplex receptacles; single-level switching
2. Technology - video port, video display device, voice port & phone; data port; clock
3. Plumbing - sink



Health Clinic E-AD-15

Features - Fixed Equipment

- F1 Base cabinets
- F2 Sink base cabinet
- F3 Wall cabinets; lockable
- F4 Cubicle curtain and track
- F5 Towel dispenser
- F6 Tack board
- F7 Soap Dispenser
- F8 Sharps Container

Features - Loose Furnishings

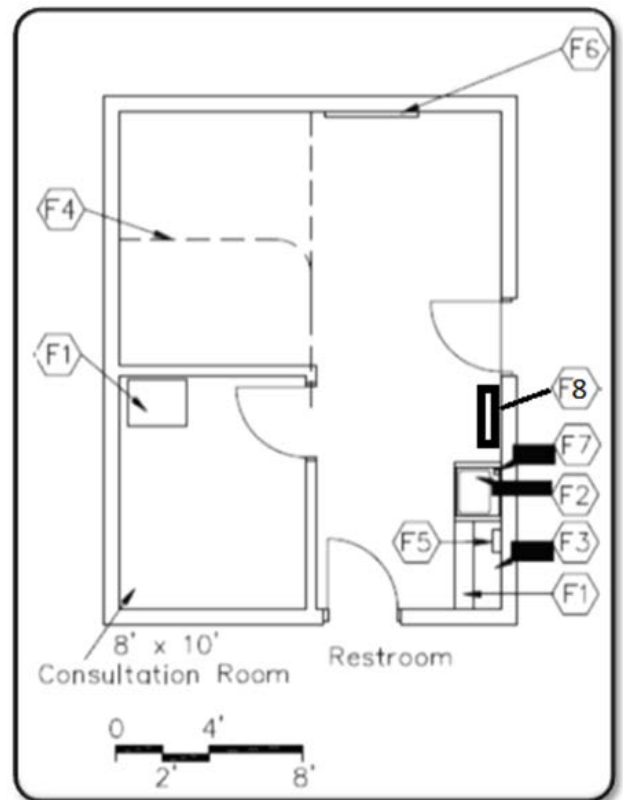
- Cots
- Refrigerator with ice making capabilities
- Desk and chair
- Chairs Stool
- Wastebasket

Finishes:

- Flooring - Seamless sheet vinyl
- Base - Resilient base
- Ceiling - Suspended, acoustical
- Walls - Painted gypsum wallboard over metal studs

Notes

1. Health Center must meet the requirements of Arkansas Code Annotated § 6-20-2517 (b)
2. Electrical - duplex receptacles; single-level switching
3. Technology - voice port & phone; data port; clock
4. Plumbing - sink
5. Restroom must be located adjacent to health clinic with entrance from the health clinic.



Itinerant Personnel Office E-AD-16

Features - Fixed Equipment

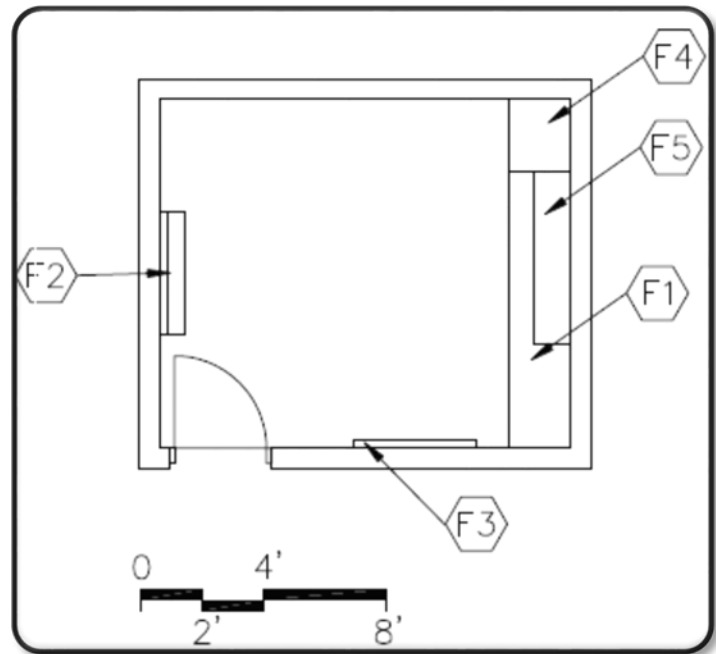
- F1 Work surface with file drawers
- F2 Marker board
- F3 Tack board
- F4 Tall wardrobe
- F5 Wall cabinets

Features - Loose Furnishings

- Desk and chair
- Computer desk return
- Visitor chairs
- Wastebasket(s)

Finishes:

- Flooring - Carpet
- Base - Resilient base
- Ceiling - Suspended, acoustical
- Walls - Painted gypsum wallboard over metal studs



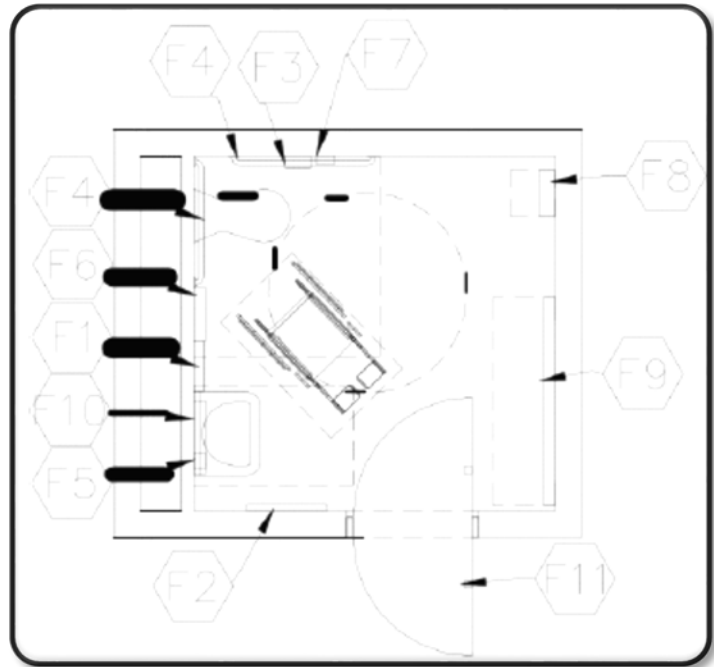
Notes

1. Electrical - duplex receptacles; single-level switching
2. Technology - data port, video port, voice port & phone; clock

Family Restroom E-AD-17

Features - Fixed Equipment

- F1 Towel dispenser
- F2 24" x 60" mirror
- F3 Toilet tissue holder
- F4 36" and 42" grab bar
- F5 Soap dispenser
- F6 Sanitary napkin dispenser/disposal
- F7 Folding utility shelf
- F8 Mounted child seat
- F9 Adult/child changing station
- F10 16" x 24" mirror with shelf
- F11 Coat hooks



Features - Loose Furnishings

Wastebasket

Finishes:

Flooring - Resilient

Optional - Ceramic mosaic tile, porcelain tile, or terrazzo

Base - Resilient base (optional: CMT, PT, or TER)

Ceiling - Suspended, acoustical

Walls - Painted concrete masonry units

Notes

1. Plumbing - water closet and lavatory; floor drain
2. Electrical - duplex receptacle; single level switching

Health Center Restroom E/M/H-AD-20

Features - Fixed Equipment

- F1 Towel dispenser
- F2 24" x 60" mirror
- F3 Toilet tissue holder
- F4 36" and 42" grab bar
- F5 Soap dispenser

Features - Loose Furnishings

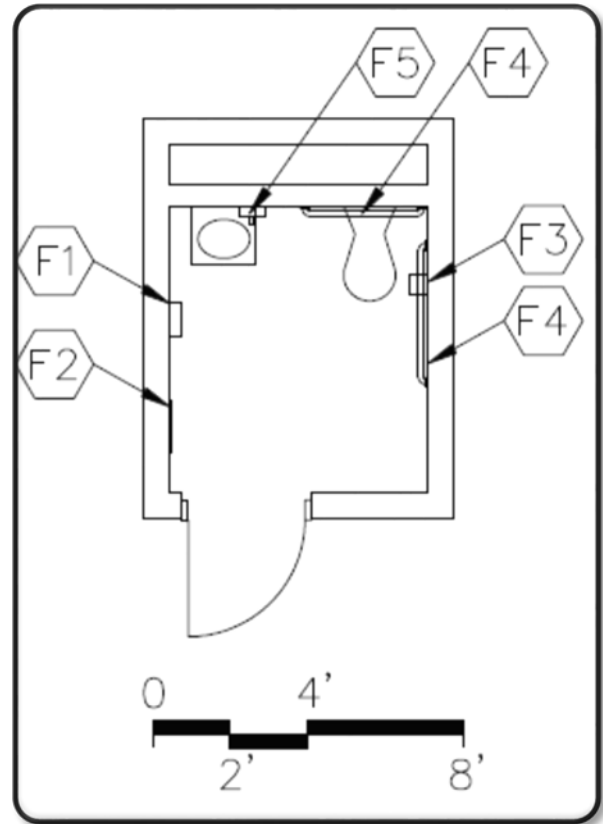
Wastebasket

Finishes:

Flooring - Resilient
 Optional - Ceramic mosaic tile, porcelain tile, or terrazzo
 Base - Resilient base (optional: CMT, PT, or TER)
 Ceiling - Suspended, acoustical
 Walls - Painted concrete masonry units

Notes

1. Plumbing - water closet and lavatory
2. Electrical - duplex receptacle; single level switching
3. Restroom must be located adjacent to health clinic with entrance from the health clinic.



Reading Room/Circulation E-MC-1

Features - Fixed Equipment

- F1 Library book shelving
- F2 Circulation desk casework
- F3 Tack board
- F4 Windows with integral blinds
- F5 Pencil sharpener support

Features - Loose Furnishings

- Student tables and chairs
- Computer workstation furniture
- Circulation desk task chair
- Atlas stand
- Paperback book rack
- Modular picture book display
- Wastebaskets
- Pencil sharpener

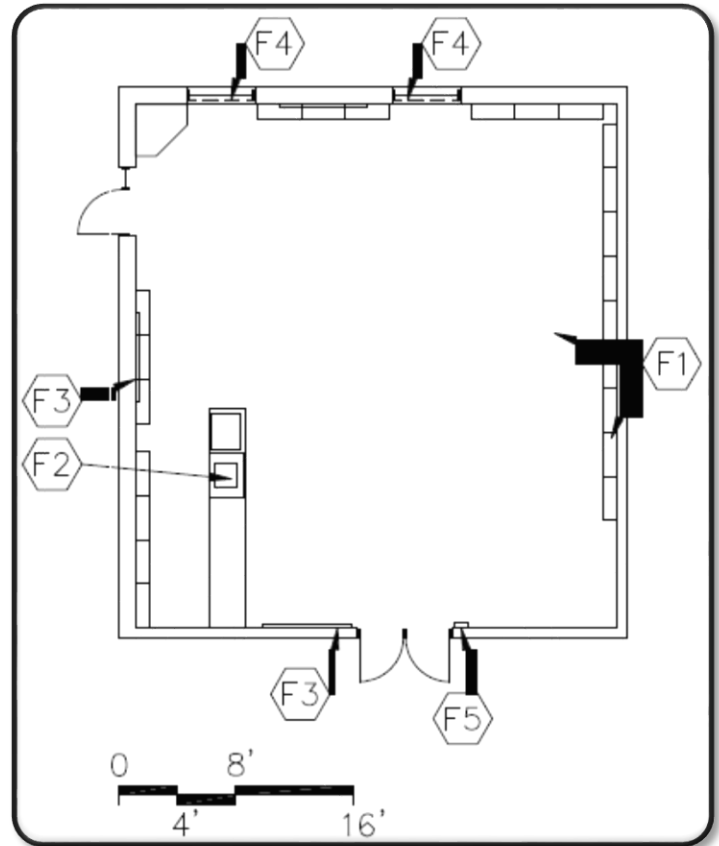
Finishes:

Flooring - Carpet

Base - Resilient base

Ceiling - Suspended, acoustical

Walls - Painted concrete masonry units



Notes

1. Electrical - duplex receptacles; single-level switching
2. Technology - video ports and video display devices, voice port & phone; data ports for students; data port for library automation system; clock
3. Miscellaneous - various sizes of casework for dictionaries, magazines, card catalog, etc.

Media Specialist Office E-MC-2

Features - Fixed Equipment

- F1 Work surface with file drawers
- F2 Marker board
- F3 Tack board
- F4 Tall wardrobe
- F5 Wall cabinets
- F6 Interior window

Features - Loose Furnishings

- Desk and chair
- Computer desk return
- Visitor chairs
- File cabinet
- Wastebasket(s)

Finishes:

Flooring - Carpet

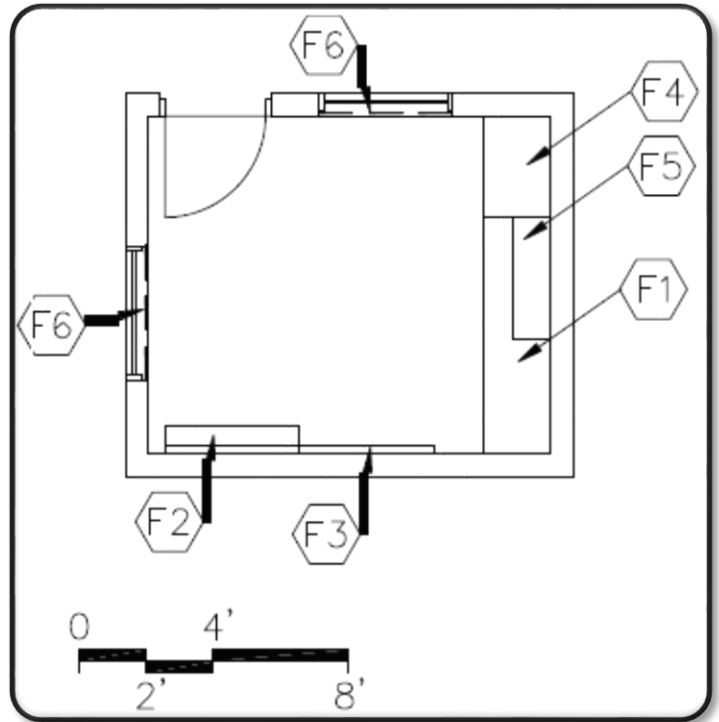
Base - Resilient base

Ceiling - Suspended, acoustical

Walls - Painted concrete masonry units

Notes

1. Electrical - duplex receptacles; single-level switching
2. Technology - data port, video port, voice port & phone; clock



Workroom/Storage E-MC-3

Features - Fixed Equipment

- F1 Base cabinets
- F2 Tack board
- F3 Bookcases
- F4 Sink base cabinet
- F5 Wall cabinets
- F6 Interior window
- F7 Towel dispenser
- F8 Soap dispenser

Features - Loose Furnishings

- Tables and chairs
- Book trucks
- Wastebasket

Finishes:

Flooring - Resilient

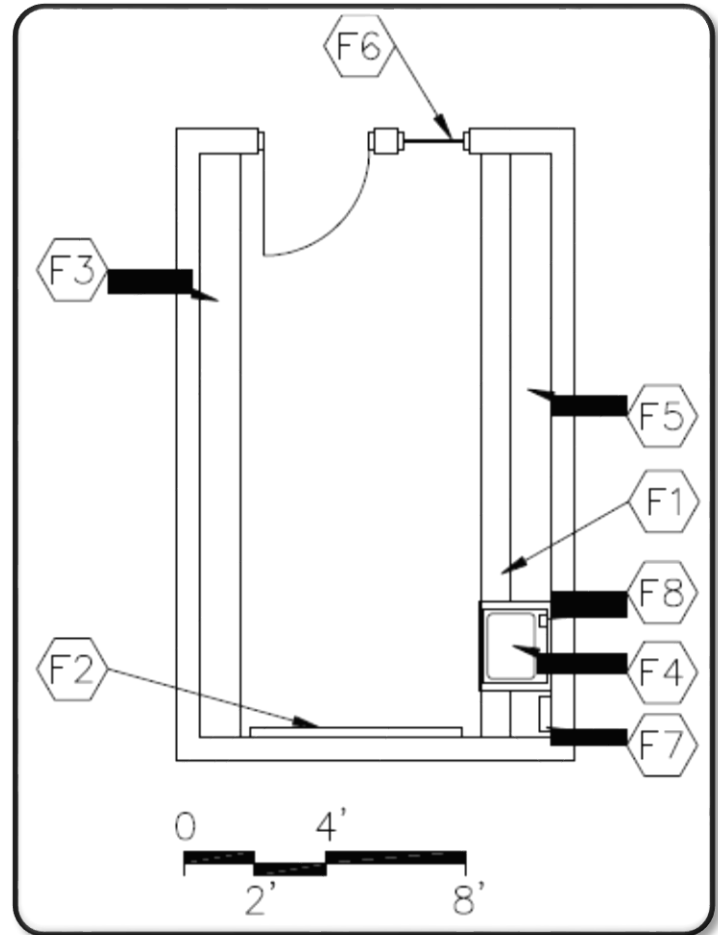
Base - Resilient base

Ceiling - Suspended, acoustical

Walls - Painted concrete masonry units

Notes

1. Electrical - duplex receptacles; single-level switching
2. Technology - data port, voice port & phone; clock
3. Plumbing - sink



Computer Lab E-MC-4

Features - Fixed Equipment

- F1 Base & wall cabinets
- F2 Marker board
- F3 Tack board
- F4 Pencil sharpener support
- F5 Tall wardrobe with file drawers

Features - Loose Furnishings

- Computer workstation furniture
- Student chairs
- Teacher workstation/computer support and chair
- File cabinet
- Wastebasket
- Pencil sharpener

Finishes:

Flooring - Carpet

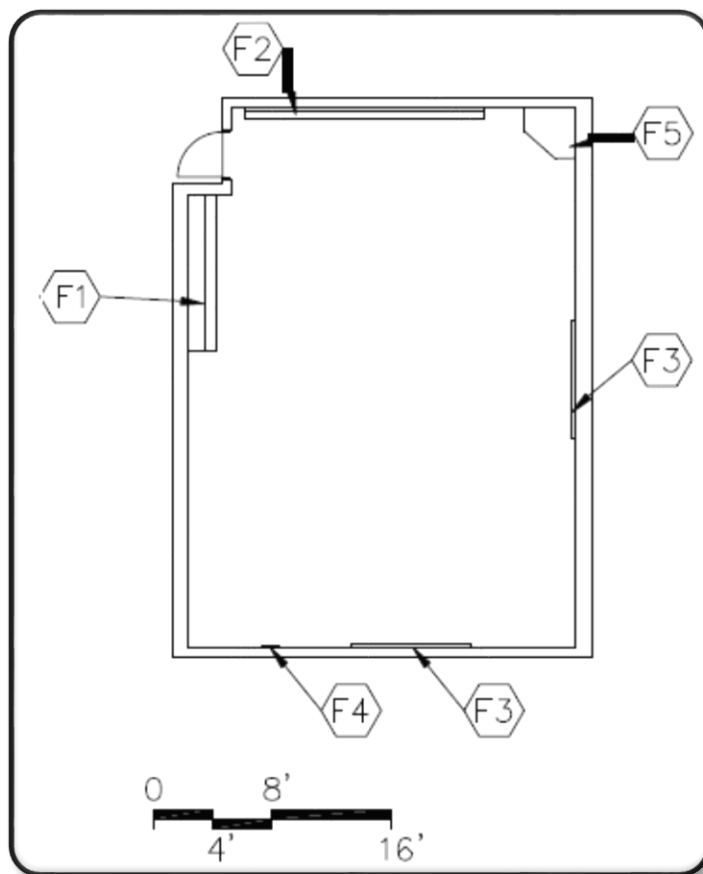
Base - Resilient base

Ceiling - Suspended, acoustical

Walls - Painted gypsum wallboard over metal studs

Notes

1. Electrical - duplex receptacles; multi-level switching
2. Technology - video port, voice port & phone; data port near teacher workstation; clock; overhead projector; classroom area network (26 ports minimum)
3. Miscellaneous - classroom area network file server; printer



A/V Storage E-MC-5

Features - Fixed Equipment

F1 Tall shelving

Features - Loose Furnishings

Desk and chair

Wastebasket

Finishes:

Flooring - Resilient

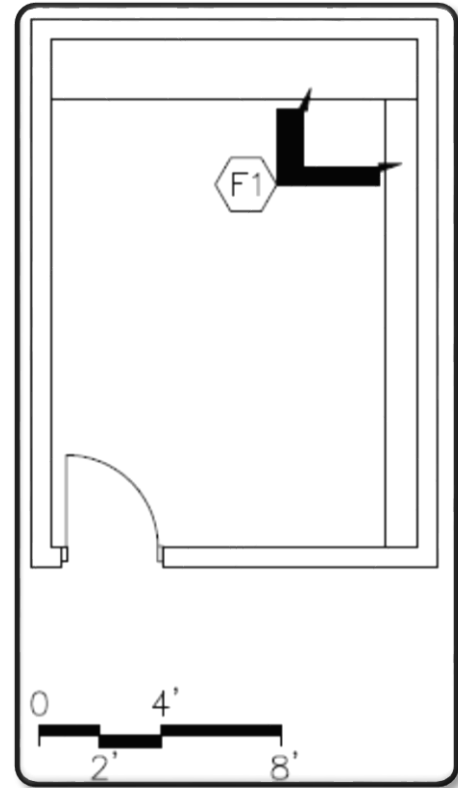
Base - Resilient base

Ceiling - Suspended, acoustical or painted structure

Walls - Painted concrete masonry units

Notes

1. Electrical - duplex receptacles; single-level switching
2. Technology - data port, voice port and phone



Conference Room E-MC-6

Features - Fixed Equipment

- F1 Marker board
- F2 Tack board
- F3 Base cabinets

Features - Loose Furnishings

- Conference table
- Chairs
- Wastebasket

Finishes:

Flooring - Carpet

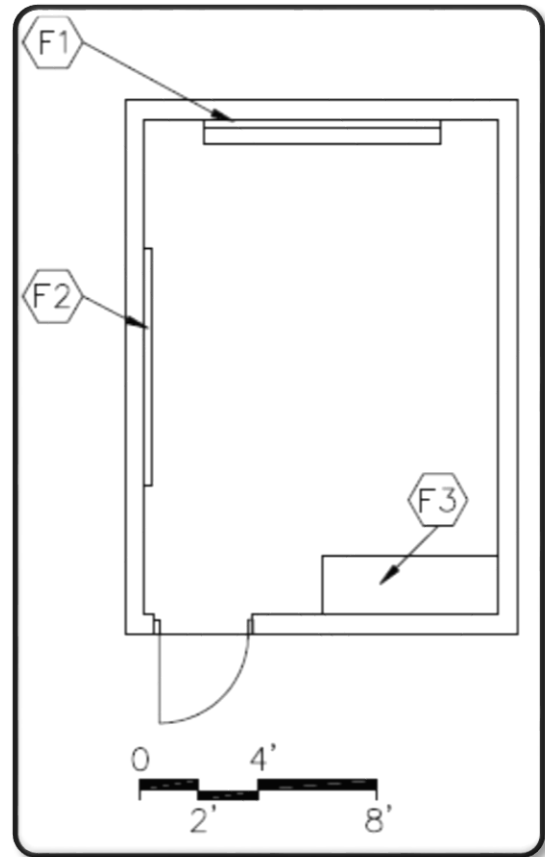
Base - Resilient base

Ceiling - Suspended, acoustical

Walls - Painted concrete masonry units

Notes

1. Electrical - duplex receptacles; multi-level switching
2. Technology - data port, voice port & phone, video port and video display device; clock



Art Room E-VA-1

Features - Fixed Equipment

- F1 Sink base cabinet, 30" deep
- F2 Tall wardrobe w/file drawers
- F3 Base cabinets, 30" deep
- F4 Tack board
- F5 Marker board
- F6 Pencil sharpener support
- F7 Windows with integral blinds
- F8 Tall storage cabinets
- F9 Wall cabinets
- F10 Towel dispensers
- F11 Soap dispensers

Features - Loose Furnishings

- Student work tables
- Computer workstation furniture
- Student chairs or stools
- Teacher workstation/computer support and chair
- Drying rack
- Desk height file cabinet
- Wastebasket
- Pencil sharpener

Finishes:

Flooring - Resilient or sealed concrete

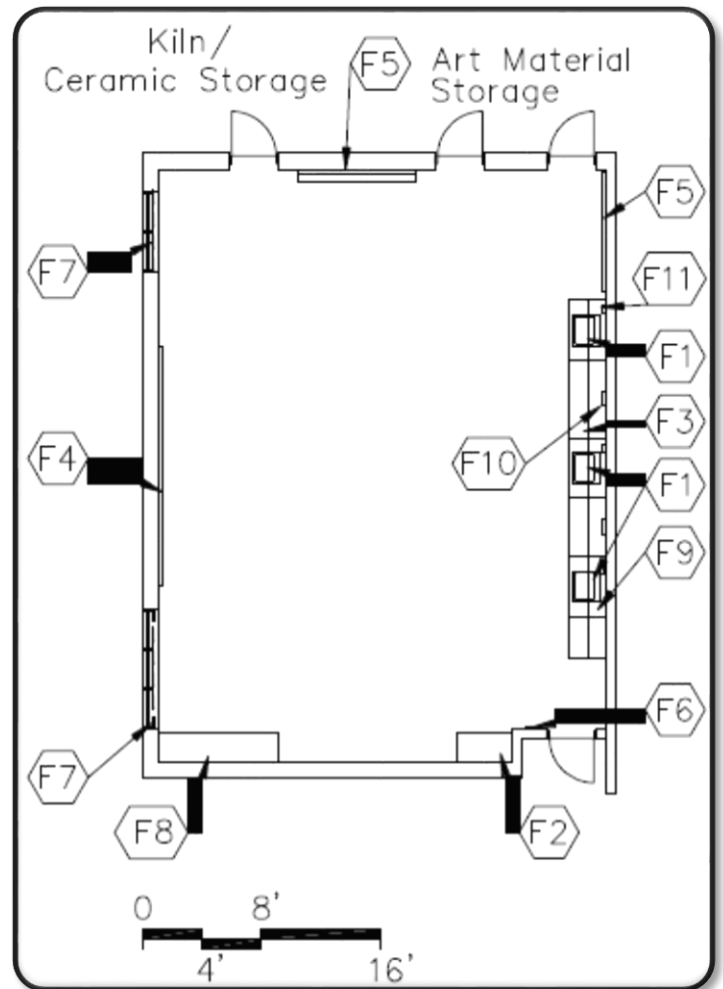
Base - Resilient base

Ceiling - Suspended, acoustical

Walls - Painted concrete masonry units

Notes

1. Electrical - duplex receptacles; multi-level switching; track lighting
2. Technology - video port, data port, voice port & phone; clock; overhead projector; data ports for students
3. Plumbing - sinks with solids interceptor
4. HVAC - manually operated exhaust air system



Kiln/Ceramic Storage E-VA-2

Features - Fixed Equipment

- F1 Base cabinets
- F2 Wall cabinets
- F3 Kiln

Features - Loose Furnishings

- Tall dry storage units
- Tall damp storage units

Finishes:

Flooring - Sealed concrete

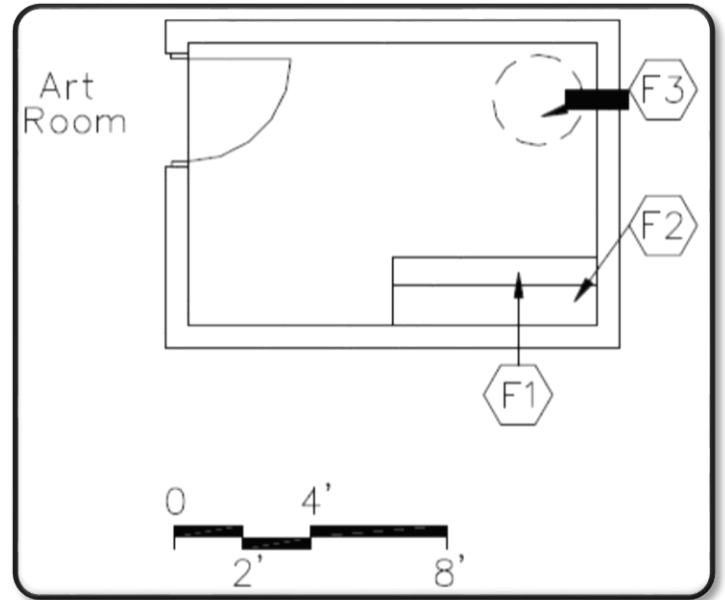
Base - Resilient base

Ceiling - Suspended, acoustical

Walls - Painted concrete masonry units

Notes

1. Electrical - duplex receptacle; single-level switching; electrical connection for kiln
2. HVAC - temperature controlled exhaust; ventilation for kiln



Art Material Storage E-VA-3

Features - Fixed Equipment

F1 Tall storage cabinets

F2 Base cabinets, 30" deep

F3 Wall cabinets, 12" deep

Features - Loose Furnishings

Mobile materials cart

Finishes:

Flooring - Resilient

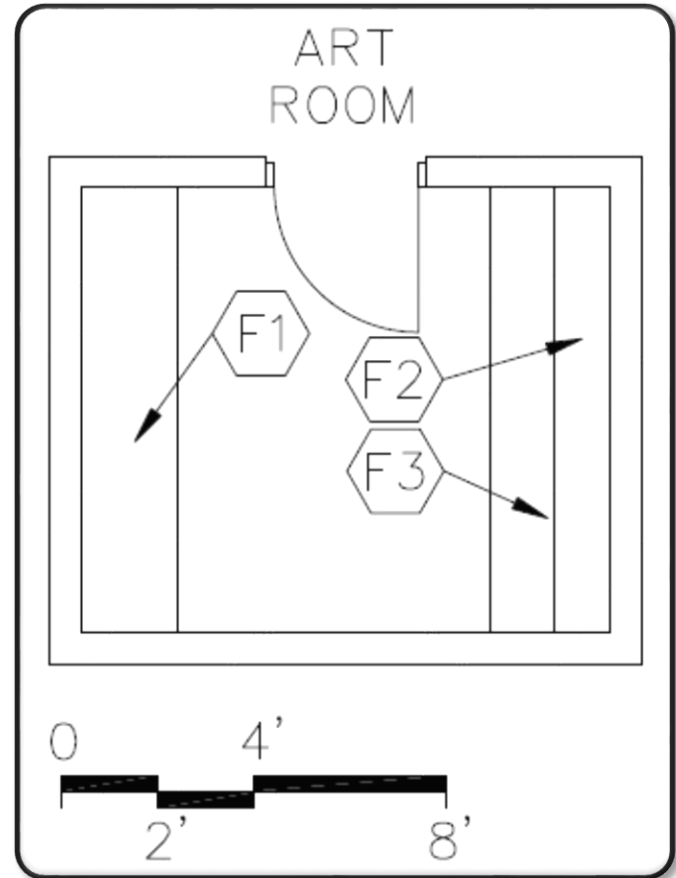
Base - Resilient base

Ceiling - Suspended, acoustical or exposed, painted structure

Walls - Painted concrete masonry units

Notes

1. Electrical - duplex receptacle; single-level switching



Music Room E-MU-1

Features - Fixed Equipment

- F1 Tall wardrobe w/file drawers
- F2 Base cabinets
- F3 Tall storage cabinets
- F4 Marker board
- F5 Tack board
- F6 Pencil sharpener support
- F7 Bookcases, 12" deep
- F8 Sink base cabinet
- F9 Towel dispenser
- F10 Soap dispenser

Features - Loose Furnishings

- Computer workstation furniture
- Risers
- Music stands
- Music chairs
- Conductor podium
- Teacher workstation/computer support and chair
- File cabinet
- Folding mobile cart for ORFF instruments
- Wastebasket
- Pencil sharpener

Finishes:

- Flooring - Carpet; Resilient-4' width in front of cabinets
- Optional: All resilient

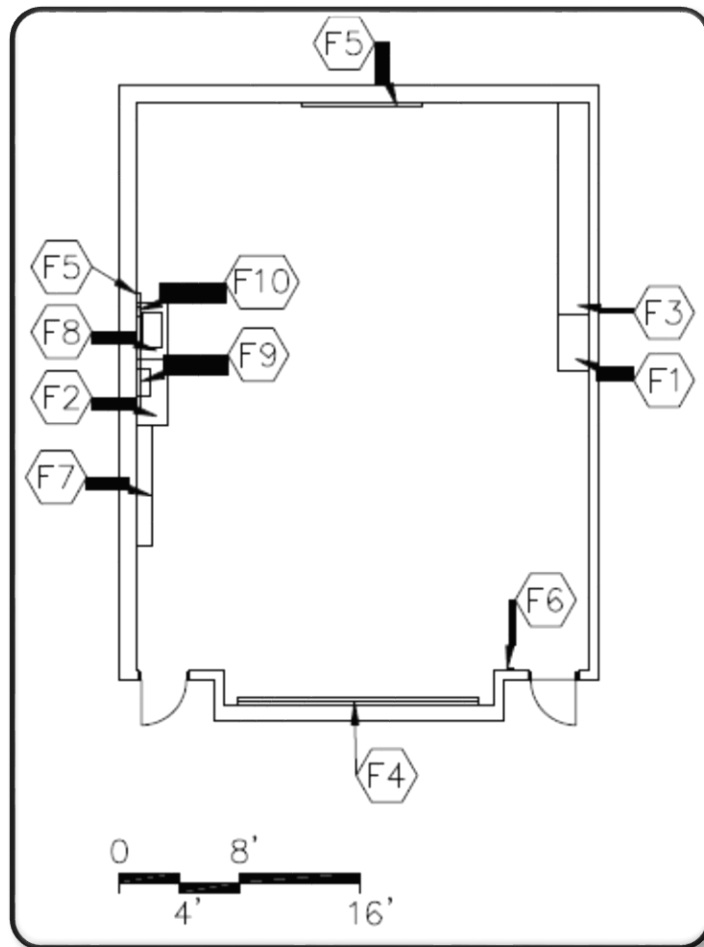
Base - Resilient base

Ceiling - Suspended, acoustical

Walls - Painted concrete masonry units

Notes

1. Electrical - duplex receptacles; multi-level switching
2. Technology - video port, data port, voice port & phone; data ports for students; clock; overhead projector
3. Plumbing - sink with drinking fountain
4. Miscellaneous - piano
5. ORFF Instruments - Large musical instruments capable of being beat upon by children.



Music Storage E-MU-2

Features - Fixed Equipment

F1 Tall storage cabinets

F2 Base cabinets, 30" deep

F3 Wall cabinets, 12" deep

Features - Loose Furnishings

Lateral files

Finishes:

Flooring - Resilient

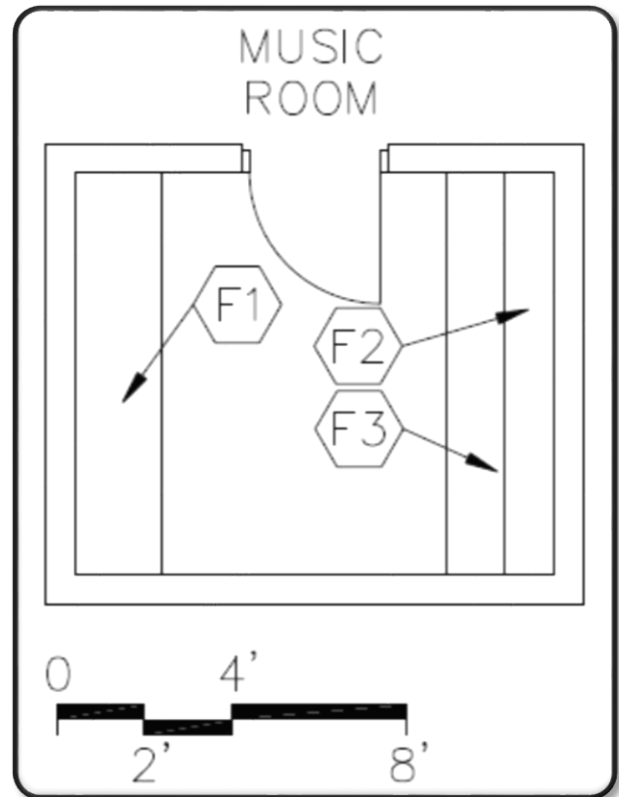
Base - Resilient base

Ceiling - Suspended, acoustical

Walls - Painted concrete masonry units

Notes

1. Electrical - duplex receptacle; single-level switching



Gymnasium E-PE-1

Features - Fixed Equipment

- F1 Volleyball sleeves and standards with cart
- F2 Safety wall wainscot
- F3 Basketball backstops - fiberglass, adjustable height

Features - Loose Furnishings

Portable marker board

Finishes:

Flooring - Resilient or fluid-applied athletic flooring

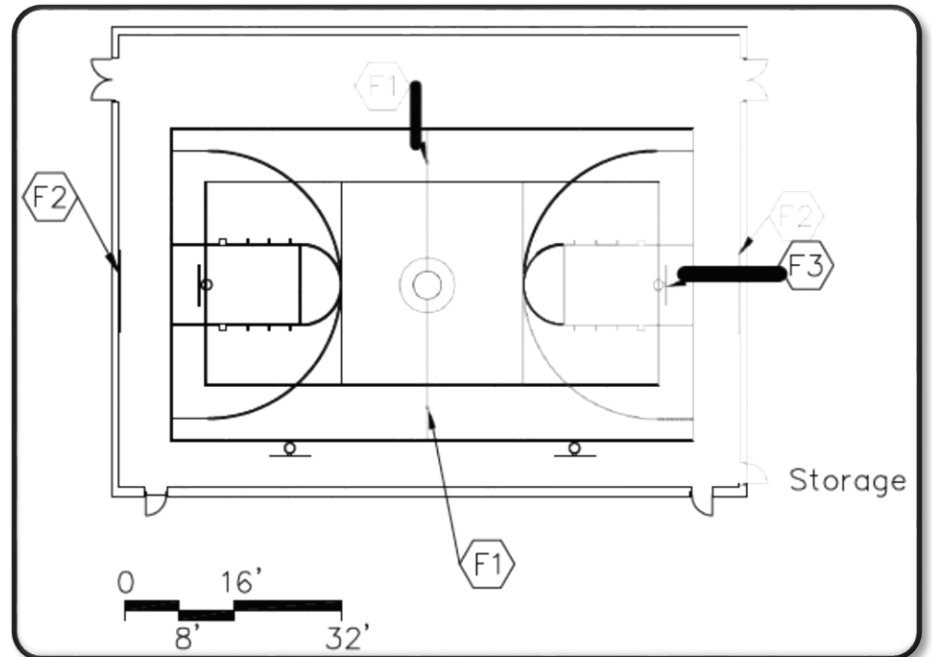
Base - Resilient base

Ceiling - Painted, exposed structure

Walls - Painted concrete masonry units

Notes

1. Electrical - duplex receptacles; telecommunications grounding
2. Technology - video ports, monitor with cart; data ports; clock with wire guards
3. Miscellaneous - court markings



P.E. Workroom/Storage E-PE-2

Features - Fixed Equipment

- F1 Open metal shelving
- F2 Tall storage

Features - Loose Furnishings

- Tumbling mats on carts
- Ball carts
- Teacher desk and chair
- Wastebasket

Finishes:

Flooring - Sealed concrete

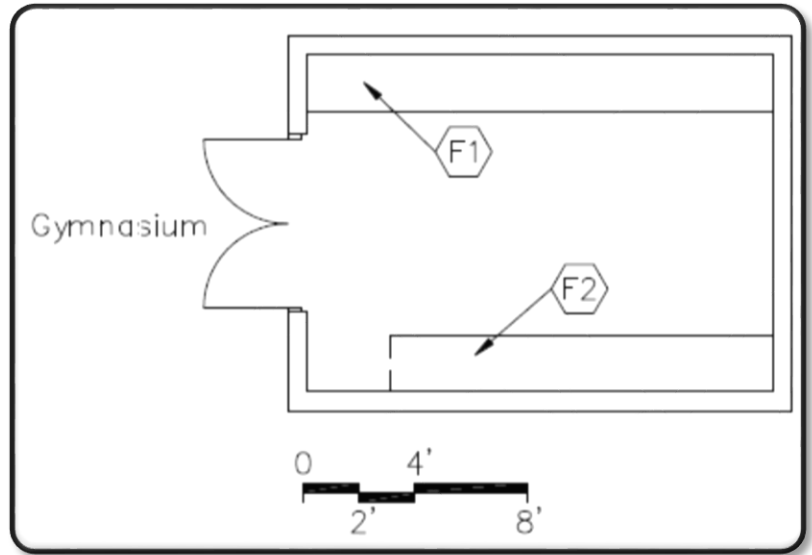
Base - Resilient base

Ceiling - Suspended, acoustical or exposed, painted structure

Walls - Painted concrete masonry units

Notes

1. Electrical - duplex receptacle; single-level switching
2. Technology - data port, voice port and phone



Student Dining E-SD-1

Features - Fixed Equipment

N/A

Features - Loose Furnishings

Tables and chairs or long tables with attached stools
Large waste receptacles
Folding or high density stack chairs for community use
Carts for chairs

Finishes:

Flooring - Resilient, porcelain tile, or terrazzo tile

Base - Resilient base

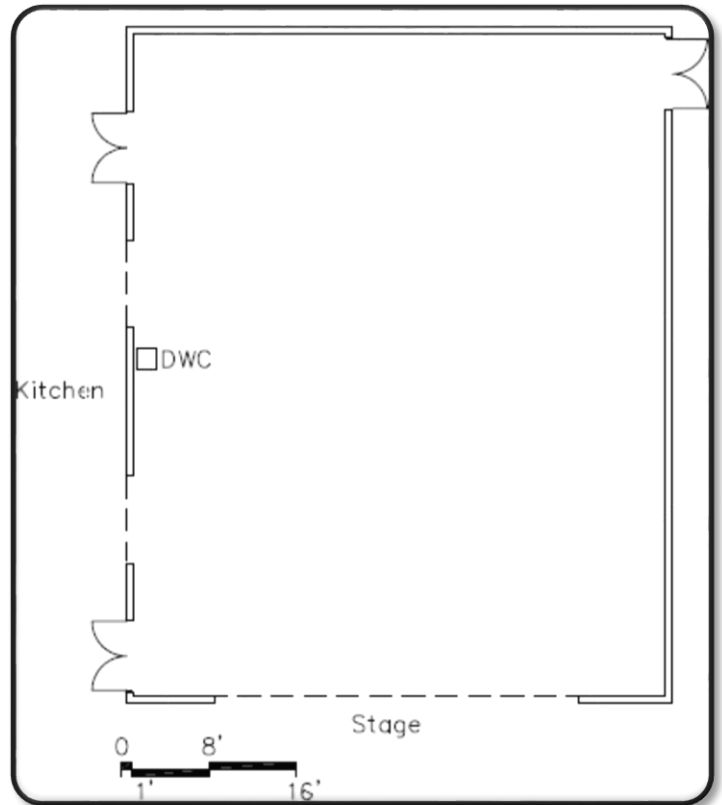
Optional - Porcelain tile

Ceiling - Suspended, acoustical

Walls - Painted concrete masonry units

Notes

1. Electrical - duplex receptacles; multi-level switching; telecommunications grounding
2. Technology - clock; overhead projector; video ports; data ports
3. Plumbing - drinking water cooler



Stage E-SD-2

Features - Fixed Equipment

- F1 Projection screen
- F2 Curtain
- F3 Curtain and valance
- F4 Operable partition
- F5 Pipe handrail

Features - Loose Furnishings

Portable risers

Finishes:

Flooring - Resilient or wood

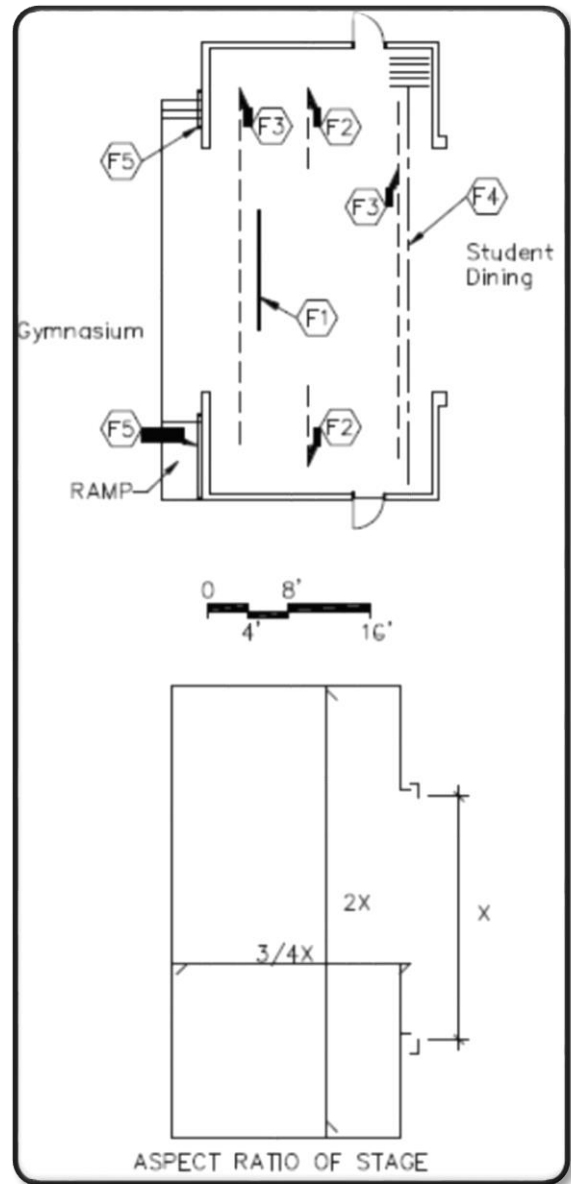
Base - Resilient base

Ceiling - Suspended, acoustical

Walls - Painted concrete masonry units

Notes

1. Electrical - duplex receptacles; single-level switching; telecommunications grounding
2. Technology - video ports and data ports - 1 each on each side of proscenium opening



Staff Dining E-SD-3

Features - Fixed Equipment

- F1 Sink base cabinet
- F2 Base and wall cabinets
- F3 Tack board
- F4 Towel dispenser
- F5 Soap dispenser

Features - Loose Furnishings

- Tables and chairs
- Refrigerator
- Microwave
- Waste receptacle

Finishes:

Flooring - Resilient, porcelain tile, or terrazzo tile

Base - Resilient base

Optional - Porcelain tile

Ceiling - Suspended, acoustical

Walls - Painted concrete masonry units

Notes

1. Electrical - duplex receptacles; single-level switching; receptacles for vending machines, refrigerator, and microwave
2. Technology - video port, voice port and phone; clock
3. Plumbing - sink
4. Miscellaneous - vending machines

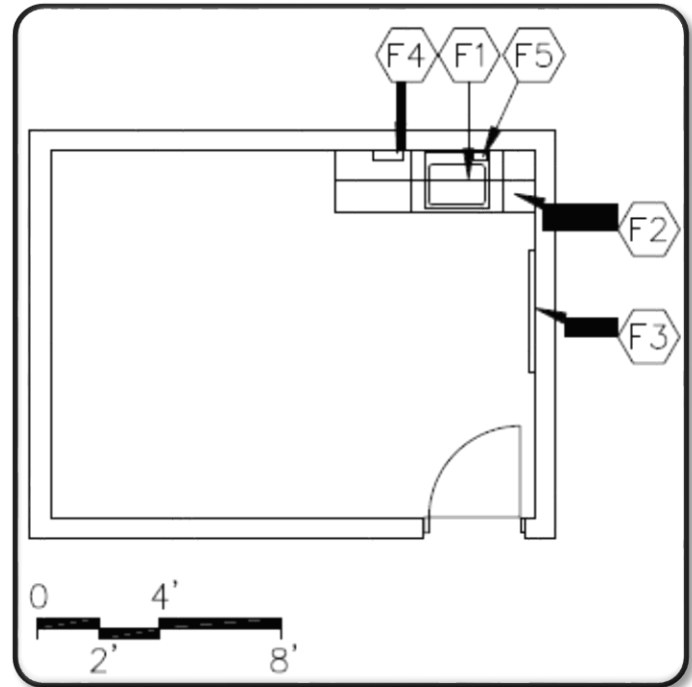


Table Storage E-SD-4

Features - Fixed Equipment

N/A

Features - Loose Furnishings

N/A

Finishes:

Flooring - Sealed concrete

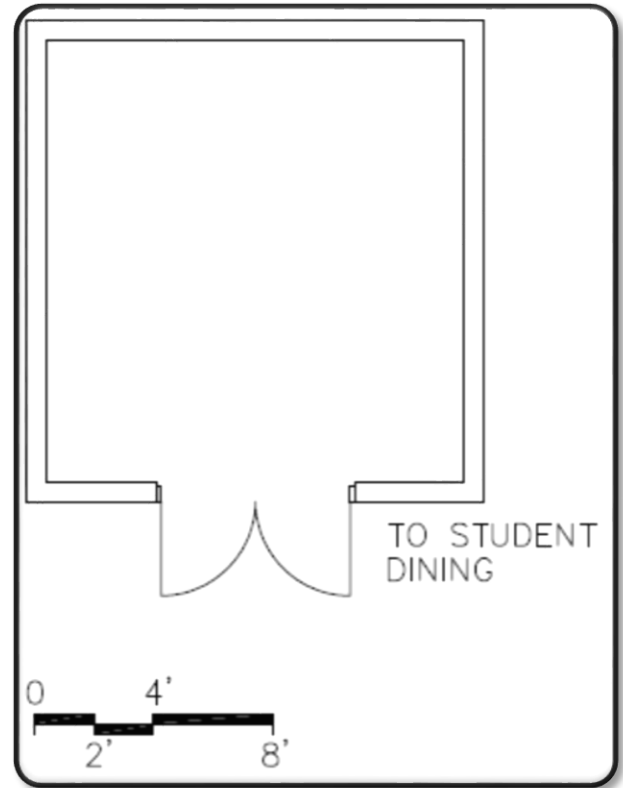
Base - Resilient base

Ceiling - Suspended, acoustical or exposed, painted structure

Walls - Painted concrete masonry units

Notes

1. Electrical - duplex receptacle; single-level switching



Warming Kitchen E-FS-1

Features - Fixed Equipment

Food Service Equipment

Features - Loose Furnishings

N/A

NOTE:

Kitchen area must be located adjacent to exterior loading dock area to receive transported food from central kitchen.

Finishes:

Flooring - Quarry tile

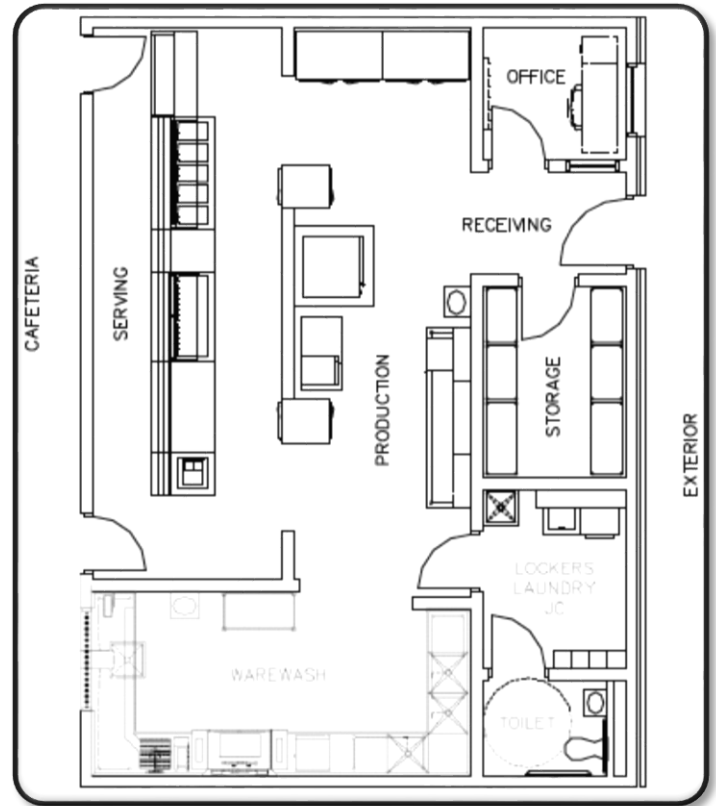
Base - Quarry tile base

Ceiling - Cleanable, suspended, acoustical

Walls - Epoxy-painted concrete masonry units

Notes

1. Electrical - dual level switching; duplex receptacles; connections to food service equipment
2. Technology - voice port and phone, data port at cash register; clock
3. Plumbing - hand washing lavatory; plumbing and gas connections; connections to food service equipment; floor drains
4. HVAC - kitchen canopy exhaust system



The space consists of various areas:

Production Area

Serving Area

Warewash

Storage

Receiving

Additional areas to be added: office, restroom, locker room, janitorial closet

Kitchen E-FS-2

Features - Fixed Equipment

Food Service Equipment

Features - Loose Furnishings

N/A

Finishes:

Flooring - Quarry tile

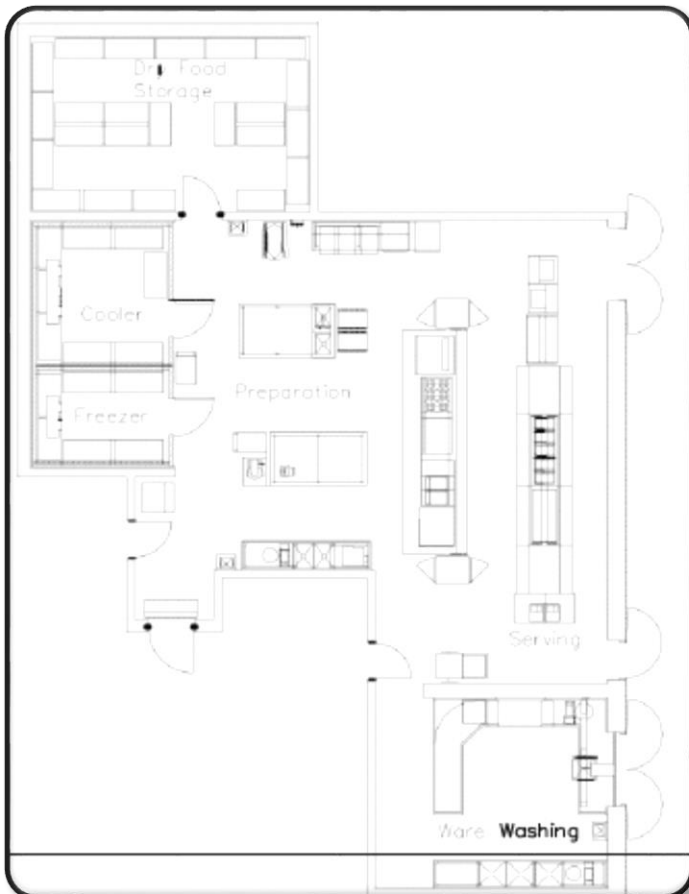
Base - Quarry tile base

Ceiling - Cleanable, suspended, acoustical

Walls - Epoxy-painted concrete masonry units

Notes

1. Electrical - dual level switching; duplex receptacles; connections to food service equipment
2. Technology - voice port and phone, data port at cash register; clock
3. Plumbing - hand washing lavatory; plumbing and gas connections; connections to food service equipment; floor drains
4. HVAC - kitchen canopy exhaust system



The space consists of various areas:

Production Area

Serving Area

Warewash

Storage

Receiving

A space plate follows for each of these spaces.

Additional areas to be added: office, restroom, locker room, janitorial closet

Kitchen - Preparation Area E-FS-2a

Features - Fixed Equipment

Food Service Equipment

Features - Loose Furnishings

N/A

Finishes:

Flooring - Quarry tile

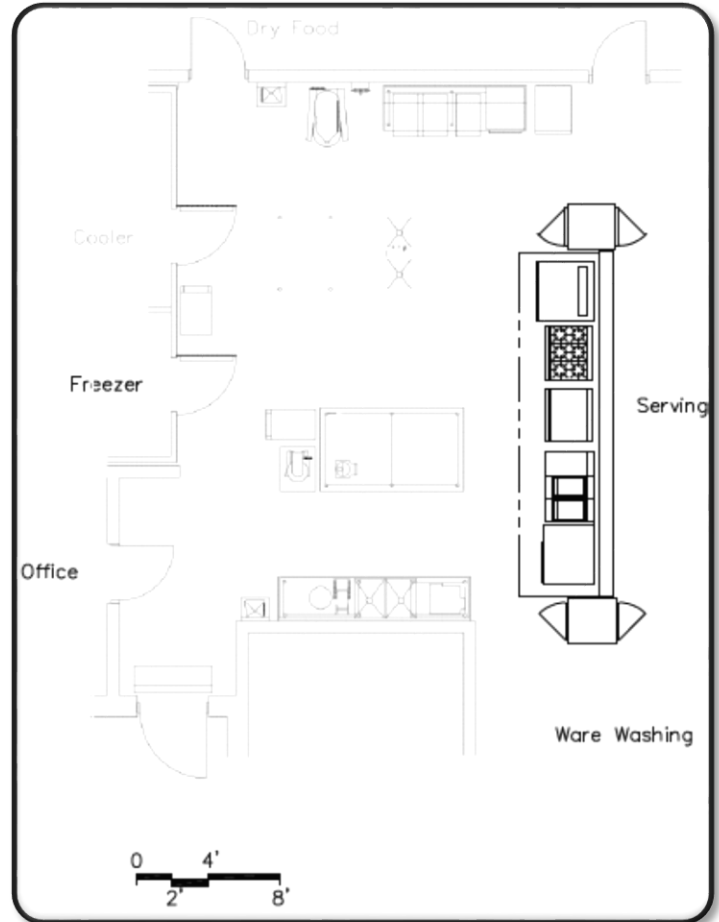
Base - Quarry tile base

Ceiling - Cleanable, suspended, acoustical

Walls - Epoxy-painted concrete masonry units

Notes

1. Electrical - duplex receptacles; dual-level switching; connections to food service equipment
2. Technology - Voice port & phone; clock
3. Plumbing - plumbing and gas connections; hand washing lavatory; floor drains



Kitchen - Serving Area E-FS-2b

Features - Fixed Equipment

Food service equipment

Features - Loose Furnishings

N/A

Finishes:

Flooring - Quarry tile

Optional - Porcelain tile

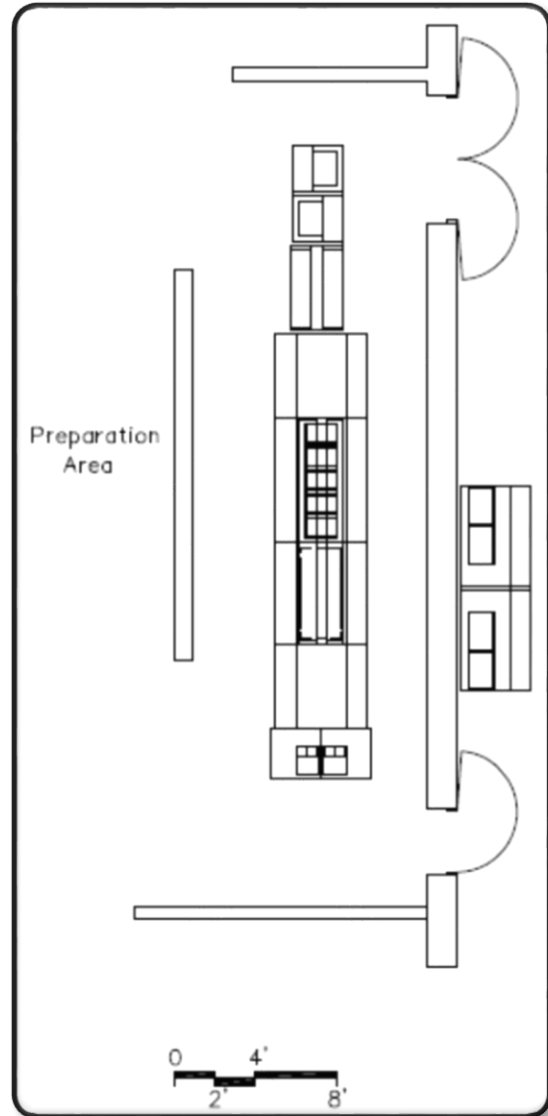
Base - Quarry tile base (optional: PT)

Ceiling - Cleanable, suspendable, acoustical

Walls - Epoxy-painted concrete masonry units

Notes

1. Electrical - duplex receptacles; dual-level switching; connections to food service equipment
2. Technology - voice port & phone; clock; data port at cash register
3. Plumbing - connections to food service equipment



Kitchen - Dry Storage E-FS-2c

Features - Fixed Equipment

Food service equipment

Features - Loose Furnishings

N/A

Finishes:

Flooring - Sealed concrete

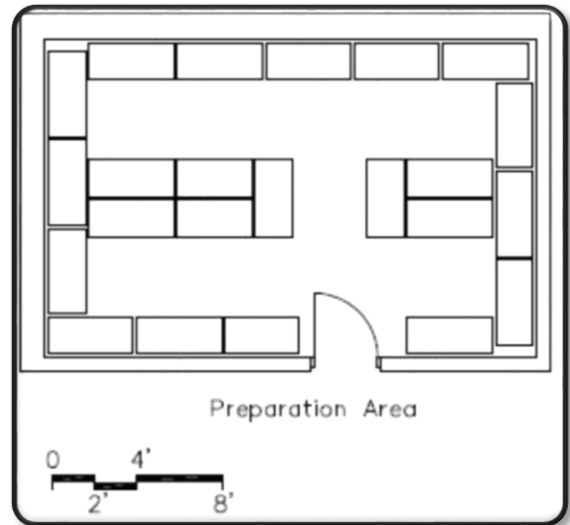
Base - Resilient base

Ceiling - Cleanable, suspendable, acoustical

Walls - Epoxy-painted concrete masonry units

Notes

1. Electrical - duplex receptacles; single-level switching



Kitchen - Cooler/Freezer E-FS-2d

Features - Fixed Equipment

Food service equipment

Features - Loose Furnishings

N/A

Finishes:

Flooring - Quarry tile

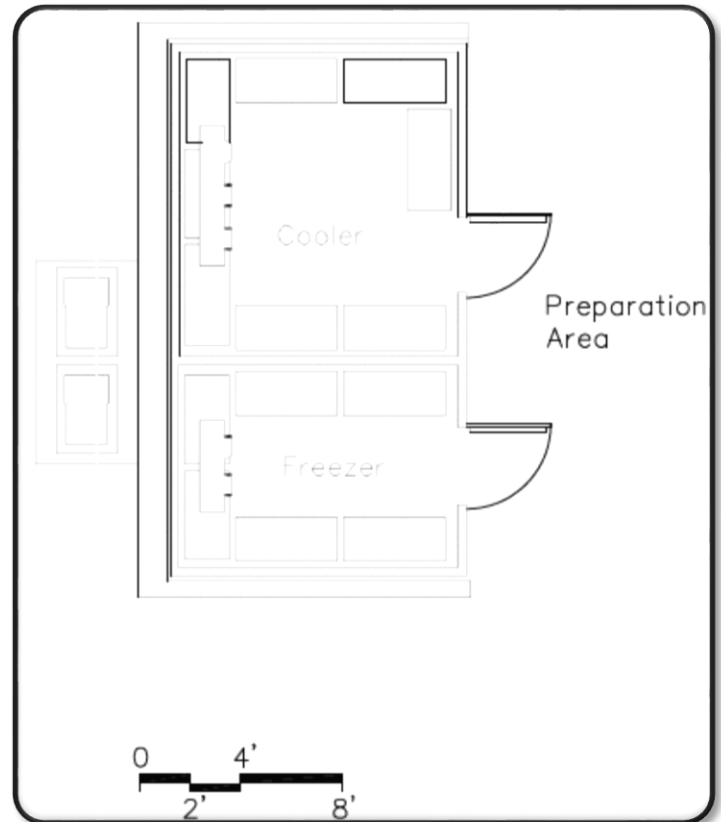
Base - Quarry tile base

Ceiling - Manufactured insulated panel

Walls - Manufactured insulated panel

Notes

1. Electrical - single-level switching; electrical connections to freezer/cooler refrigeration equipment



Kitchen - Ware Washing E-FS-2e

Features - Fixed Equipment

Food service equipment

Features - Loose Furnishings

N/A

Finishes:

Flooring - Quarry tile

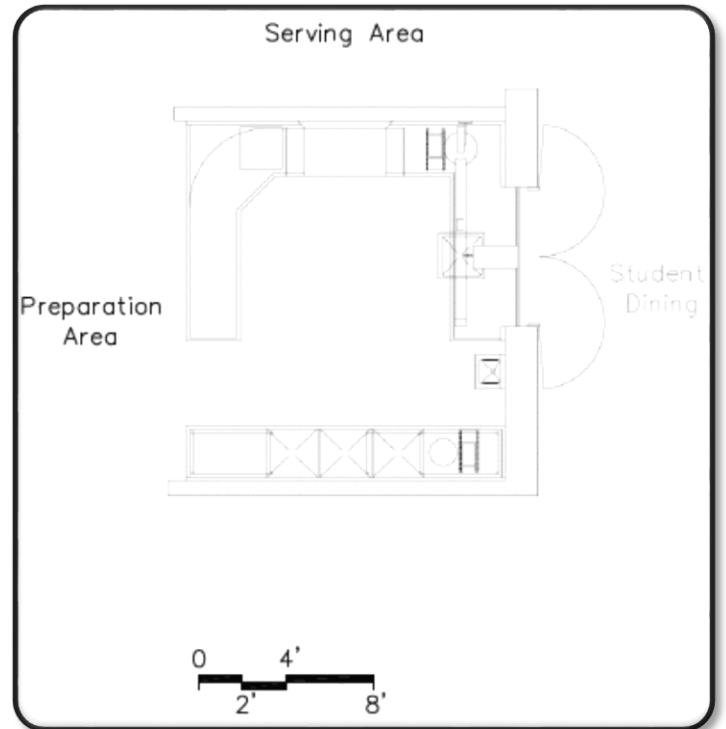
Base - Quarry tile base

Ceiling - Cleanable, suspendable, acoustical

Walls - Epoxy-painted concrete masonry units

Notes

1. Electrical - duplex receptacle; dual-level switching; connections to food service equipment
2. HVAC - exhaust hood system
3. Plumbing - lavatory



Dietician's Office E-FS-3

Features - Fixed Equipment

- F1 Work surface with file drawers
- F2 Marker board
- F3 Tack board
- F4 Tall wardrobe
- F5 Wall cabinets

Features - Loose Furnishings

- Desk and chair
- Computer desk return
- Visitor chairs
- Wastebasket

Finishes:

Flooring - Resilient

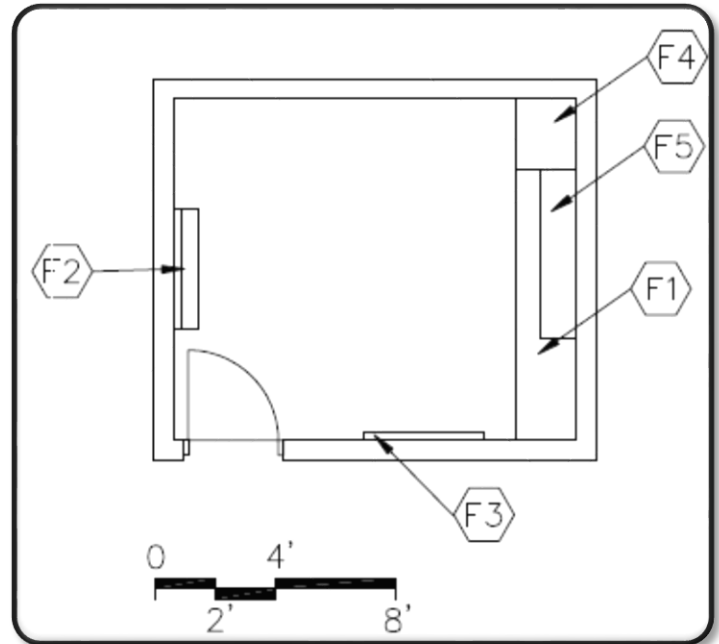
Base - Resilient base

Ceiling - Suspended, acoustical

Walls - Painted concrete masonry units

Notes

1. Electrical - duplex receptacles; single-level switching
2. Technology - each data port, video port, voice port & phone; clock



Restroom E-FS-4

Features - Fixed Equipment

- F1 Towel dispenser
- F2 24" x 60" mirror
- F3 Toilet tissue holder
- F4 36" and 42" grab bar
- F5 Soap dispenser

Features - Loose Furnishings

Wastebasket

Finishes:

Flooring - Resilient

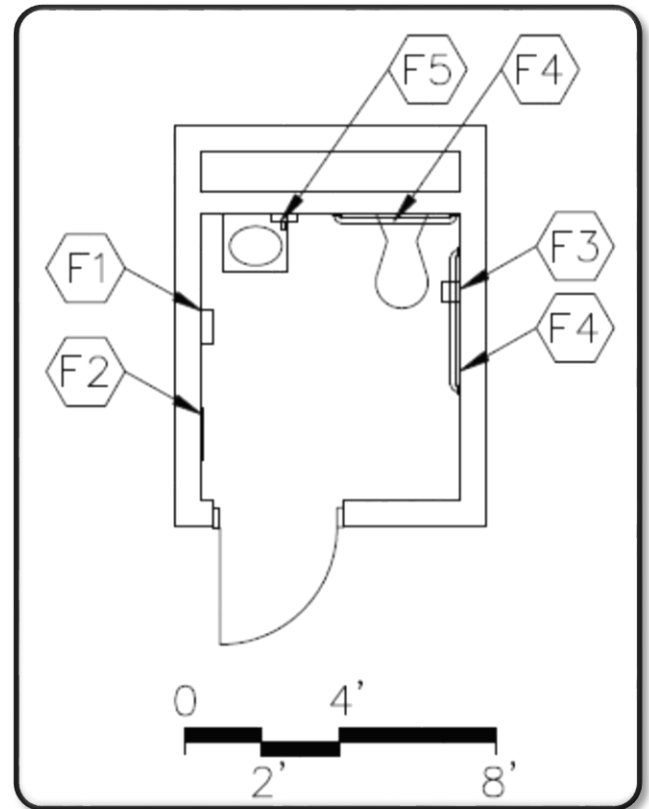
Base - Resilient base (optional: CMT, PT, or TER)

Ceiling - Suspended, acoustical

Walls - Painted concrete masonry units

Notes

1. Plumbing - water closet and lavatory
2. Electrical - single-level switching; duplex receptacle



Locker Room E-FS-5

Features - Fixed Equipment

- F1 24" x 60" mirror
- F2 Lockers
- F3 Wall cabinets
- F4 Mop holder

Features - Loose Furnishings

- Chairs
- Washer
- Dryer
- Wastebasket

Finishes:

Flooring - Resilient

Base - Resilient base

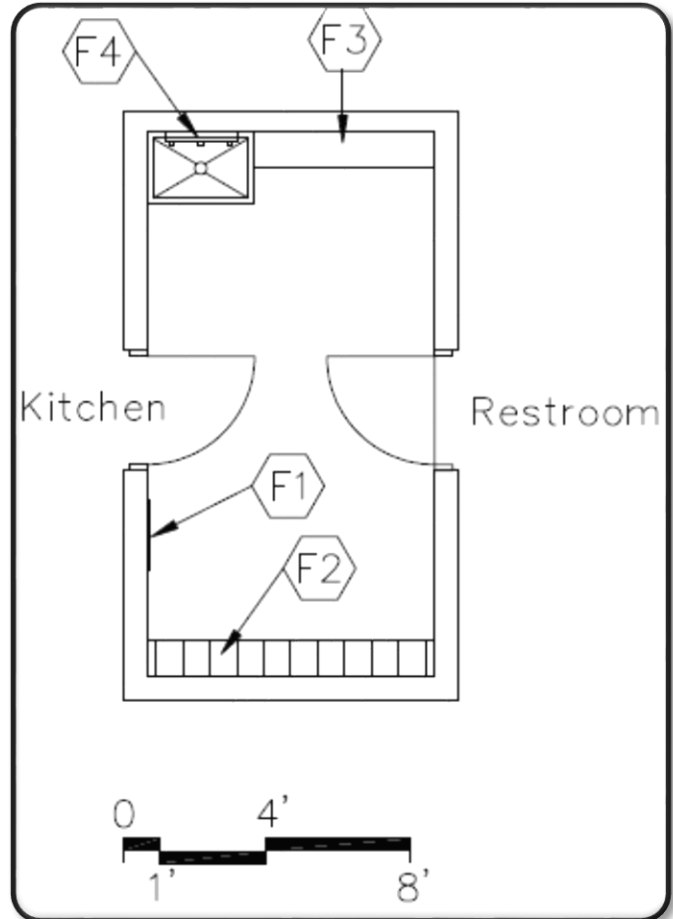
Ceiling - Suspended, acoustical, with high-impact, hold-down clips

Optional - Exposed, painted pre-cast units

Walls - Painted concrete masonry units

Notes

1. Plumbing - floor service sink; floor drain
2. Electrical - single-level switching; (1) duplex receptacle
3. HVAC - dryer vent system; manually operated exhaust air system
4. Technology - clock



Workroom E-CU-1

Features - Fixed Equipment

- F1 Metal shelving
- F2 Lockers
- F3 Mop holder
- F4 Soap dispenser
- F5 Towel dispenser

Features - Loose Furnishings

- Workbench
- Stool
- Recycling bins
- Waste receptacles

Finishes:

Flooring - Sealed concrete

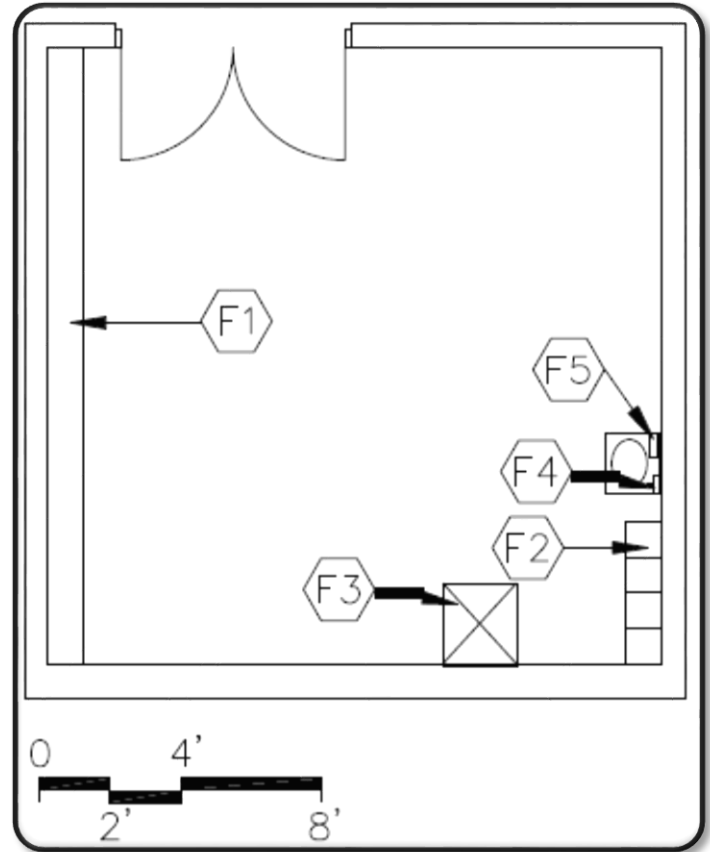
Base - Resilient base

Ceiling - Suspended, acoustical or exposed, painted structure

Walls - Painted concrete masonry units

Notes

1. Electrical - duplex receptacle; single-level switching; electrical receptacles for custodial equipment
2. Plumbing - floor service sink; handwash sink
3. Technology - voice port and phone; clock



Custodial Office E-CU-2

Features - Fixed Equipment

- F1 Work surface with file drawers
- F2 Marker board
- F3 Tack board
- F4 Tall wardrobe
- F5 Wall cabinets

Features - Loose Furnishings

- Desk and chair
- Computer desk return
- Visitor chairs
- Wastebasket

Finishes:

Flooring - Resilient

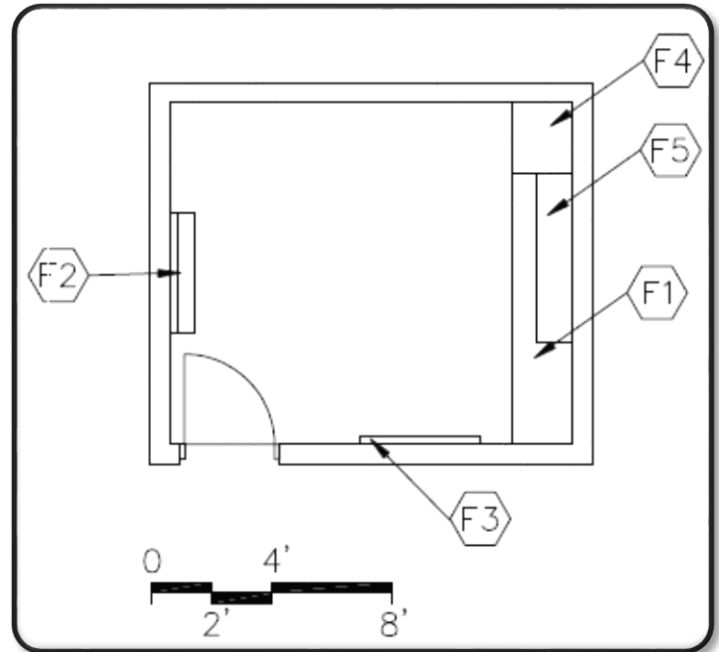
Base - Resilient base

Ceiling - Suspended, acoustical

Walls - Painted concrete masonry units

Notes

1. Electrical - duplex receptacles; single-level switching
2. Technology - data port, voice port & phone; clock; modem port for temperature controls



Large Group Restrooms E-BS-1

Features - Fixed Equipment

- F1 Towel dispenser
- F2 24" x 60" mirror
- F3 Toilet tissue holder
- F4 36" and 42" grab bar
- F5 Soap dispenser
- F6 Toilet partitions
- F7 16" x 24" mirrors

Features - Loose Furnishings

Waste receptacles

Finishes:

Flooring - Ceramic mosaic tile base
Optional - Porcelain tile or terrazzo tile

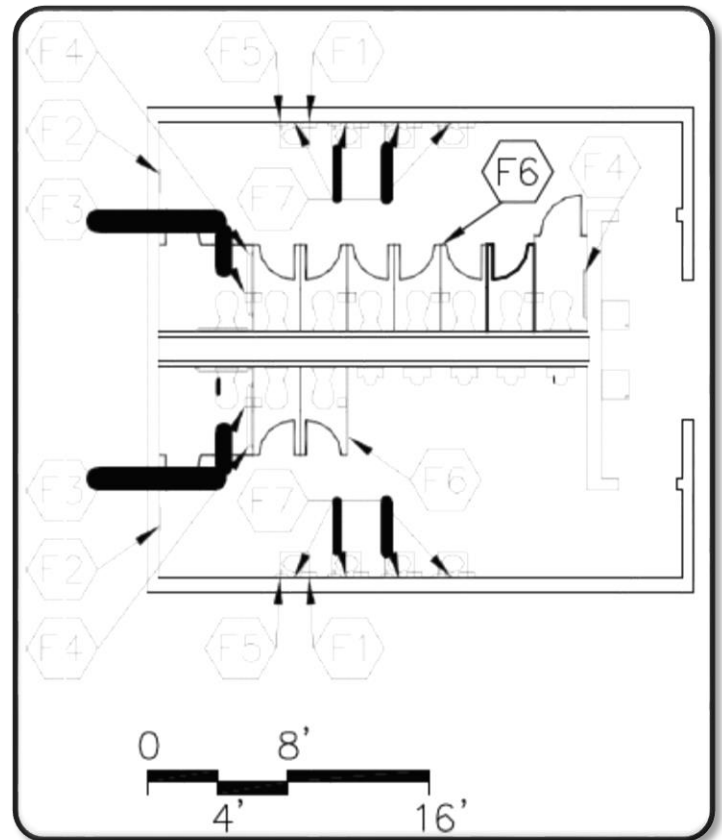
Base - Ceramic mosaic tile base
Optional - Structural glazed tile base or porcelain tile base

Ceiling - Suspended, acoustical
Optional - Abuse-resistant gypsum wallboard

Walls - Painted concrete masonry units

Notes

1. Plumbing - water closets, urinals, lavatories, and hydrants; water coolers; floor drains
2. Electrical - single-level switching; duplex receptacle



Custodial Closet E-BS-2

Features - Fixed Equipment

- F1 Mop holder
- F2 Wall cabinets

Features - Loose Furnishings

N/A

Finishes:

Flooring - Sealed concrete

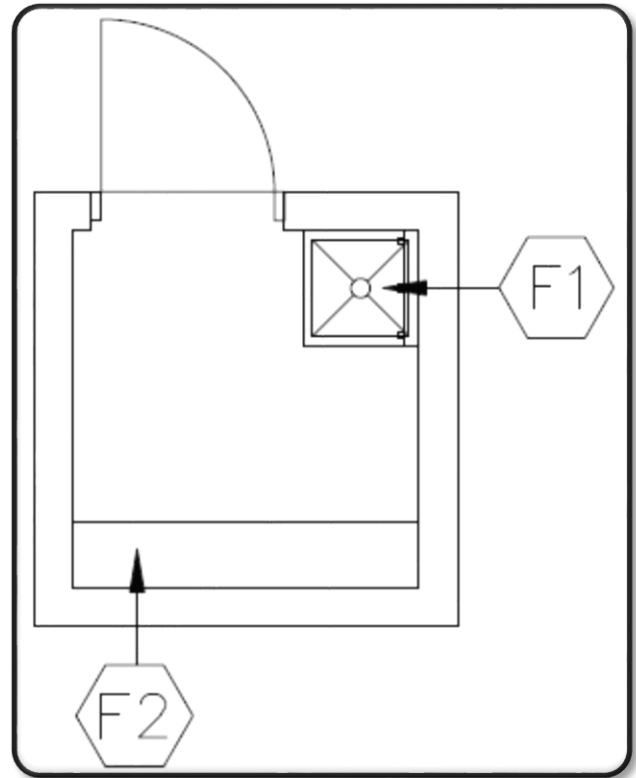
Base - Resilient base

Ceiling - Exposed, painted structure

Walls - Painted concrete masonry units

Notes

1. Electrical - duplex receptacle; single-level switching
2. Plumbing - service sink and floor drain sink



Electrical Closet E-BS-3

Features - Fixed Equipment

N/A

Features - Loose Furnishings

N/A

Finishes:

Flooring - Sealed concrete

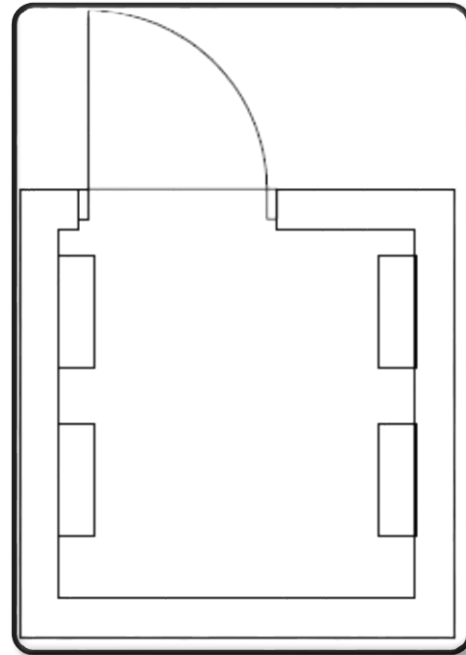
Base - Resilient base

Ceiling - Exposed, painted structure

Walls - Painted concrete masonry units

Notes

1. Electrical - duplex receptacle; single-level switching; electrical switchgear



Telecommunications Room

E-BS-4

Features - Fixed Equipment

N/A

Features - Loose Furnishings

N/A

Finishes:

Flooring - Sealed concrete

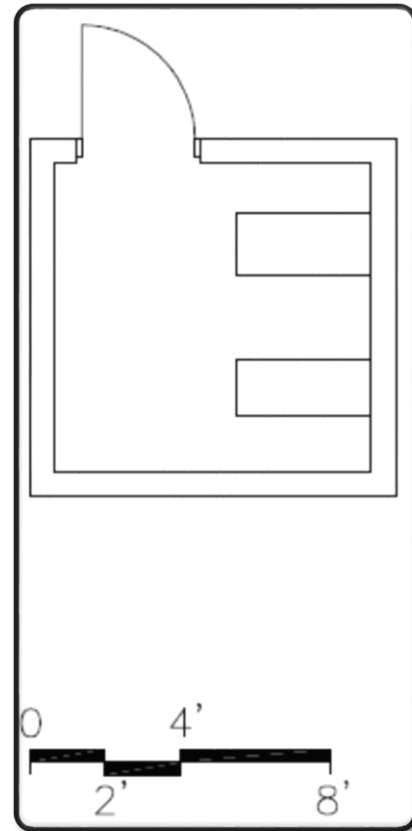
Base - Resilient base

Ceiling - Exposed, painted structure

Walls - Painted concrete masonry units

Notes

1. Electrical - duplex receptacle; single-level switching; telecommunications grounding
2. Technology - technology equipment; plywood backboard



Corridors/Vestibules

E-BS-5

Features - Fixed Equipment

- F1 Fire extinguishers and cabinets
- F2 Recessed vinyl floor mats or surface mats

Features - Loose Furnishings

Recycling bins and waste receptacles

Finishes:

Flooring - Resilient, porcelain tile, or terrazzo

Base - Resilient base

Optional - Structural glazed tile

Ceiling - Suspended, acoustical

Optional in vestibules - Abuse-resistant gypsum wallboard

Walls - Painted concrete masonry units

NOTE - At entries adjacent to dining/commons area, match dining/commons flooring.

Notes

1. Electrical - duplex receptacles; dual-level switching
2. Technology - clocks, wireless access points; video ports
3. Plumbing - drinking water coolers
4. Miscellaneous - display cases

Corridors shall be a minimum of 8 feet wide.

Corridors are to meet the egress requirements applicable codes.

Instructional and activity areas shall be accessible by corridors without passing through another instructional or activity area.

Area of vestibules is to be included within area allotted for corridors.

Width of vestibules can be no less than minimum width of adjacent corridor.

Minimum corridor length recommended is 8 feet between doors.

Vestibules are to be provided at major entrances/exits.

Mechanical Room/Decks

E-BS-6

Features - Fixed Equipment

To be determined by Design Professional

Features - Loose Furnishings

N/A

Finishes:

Flooring - Sealed concrete

Base - Resilient base

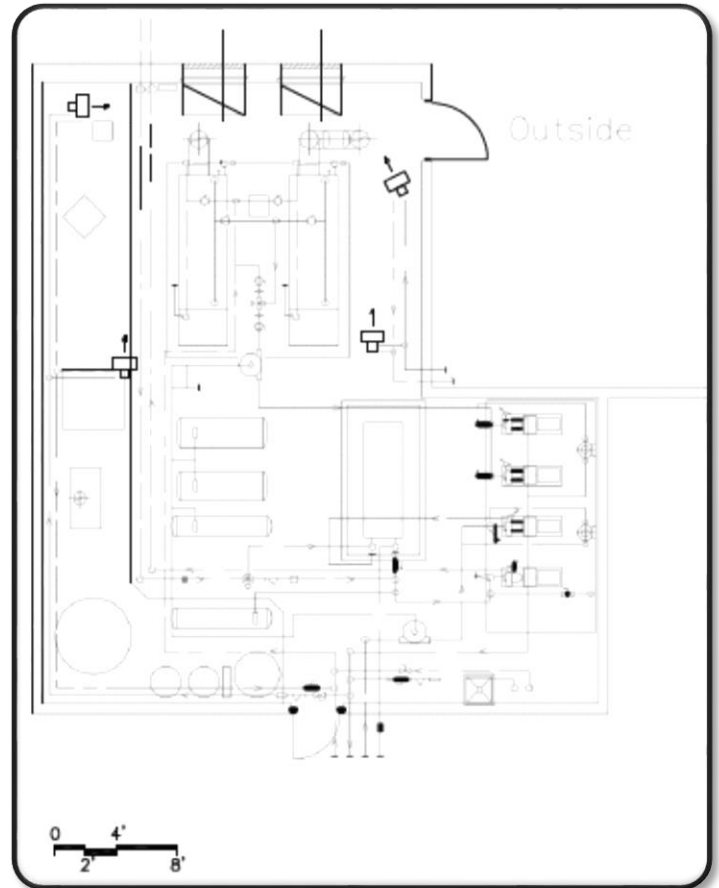
Ceiling - Exposed, painted structure

Walls - Painted concrete masonry units

Optional - Can use metal panel on CMU or metal panel on metal framing wall system for penthouse

Notes

1. Electrical - dual-level switching; to be determined by Design Professional
2. Plumbing - to be determined by Design Professional



Storage Area E-BS-7

Features - Fixed Equipment

F1 Open metal shelving

Features - Loose Furnishings

N/A

Finishes:

Flooring - Sealed concrete

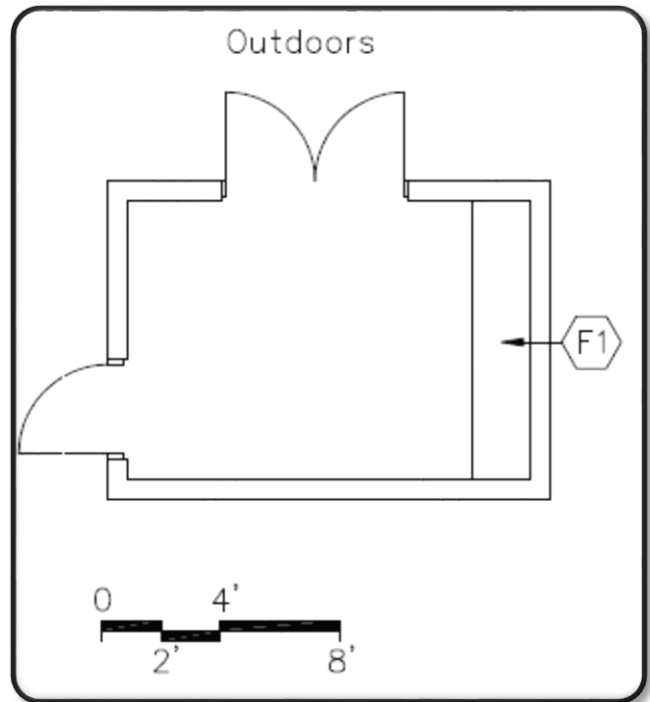
Base - Resilient base

Ceiling - Exposed, painted structure

Walls - Painted concrete masonry units

Notes

1. Electrical - single-level switching; duplex receptacles



Central Storage Area E-BS-8

Features - Fixed Equipment

F1 Open metal shelving

Features - Loose Furnishings

N/A

Finishes:

Flooring - Sealed concrete

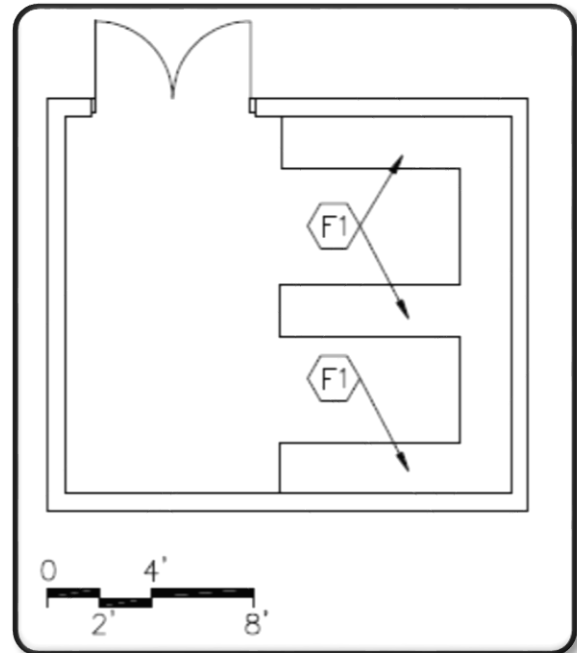
Base - Resilient base

Ceiling - Exposed, painted structure

Walls - Painted concrete masonry units

Notes

1. Electrical - single-level switching; duplex receptacles



Loading/Receiving Area E-BS-9

Features - Fixed Equipment

F1 Loading dock leveler and dock bumpers

Features - Loose Furnishings

N/A

Finishes:

Flooring - Sealed concrete

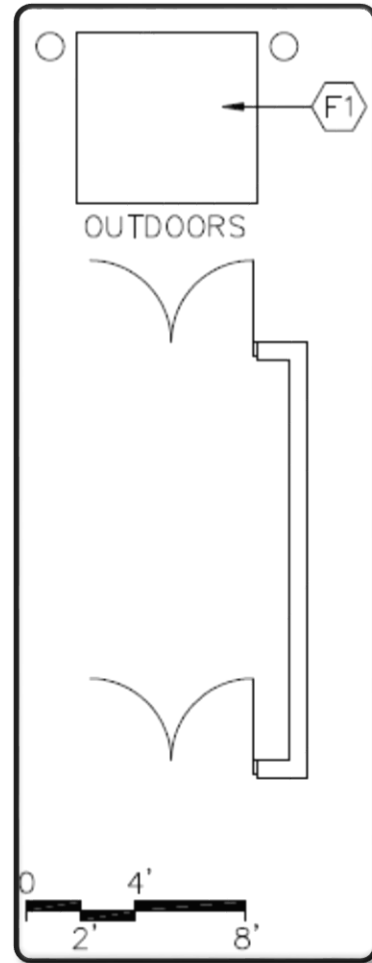
Base - Resilient base

Ceiling - Exposed, painted structure

Walls - Painted concrete masonry units

Notes

1. Electrical - single-level switching; duplex receptacles



Main Cross Connect E-BS-10

Features - Fixed Equipment

- F1 Open metal shelving
- F2 Tack board
- F3 Marker board

Features - Loose Furnishings

- Desk and chair
- Wastebasket

Finishes:

Flooring - Resilient

Base - Resilient base

Ceiling - Suspended acoustical

Walls - Painted concrete masonry units

Notes

1. Electrical - duplex receptacles; single-level switching; telecommunications grounding
2. Technology - data port, voice port & phone; technology equipment; plywood backboard
3. Miscellaneous - Provide distribution equipment with an equipment electrical ground.

